



Memorandum

Tyler S. Ferguson
Development Engineer

To: ***Address Map Holders***

Date: ***April 27, 2004***

Re: ***City of Wheaton Address changes***

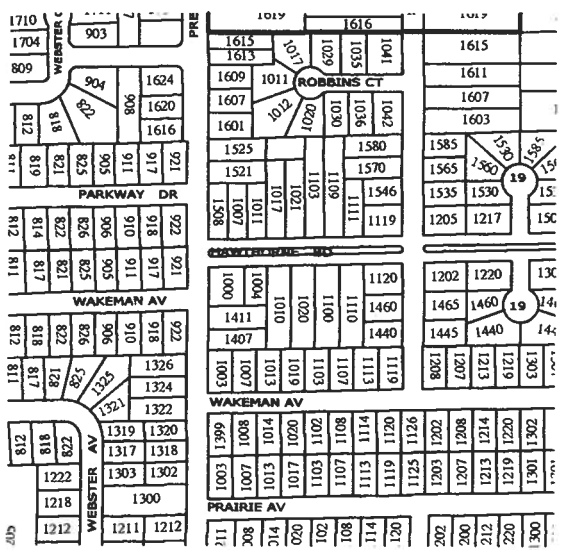
Listed below are changes to the official City of Wheaton Address map:

	Old address	New Address
1.	Hawthorne Blvd. Resubdivision	1000 and 1004 Hawthorne Blvd.
2.	Weaver Ct. Resubdivision	696, 700 & 702 Weaver Ct.
3.	Atten Park Resubdivision	2201 & 2217 Warrenville Ave.

Please adjust your records accordingly.

Cc: All Address Map holders

#1
1
1" = 600'



#2

529
533
555
609
619
627
804
810

805
811
107
113
117
127
803
805
809
815
823
898
905
907
913

815
1001
1101
1015
1019
1103

PERSHING AV

528
530
532
533
535
604
612
620
624
628
696
700
702
617
611
605
625
635
625
623

710
703
709
709
712
715
714
719
723
716
718
725
714
717
711
701
710
714
711
706
701
802
810
805
809
816
813
819
823
824
823
904
905
906
909
910
913
916
913
922
914
920
926
1002
1004
1014
923

WEAVER CT

4201
8101
4101
0101
9001
326
5201
6101
5101
1101
1001
426

0201
8101
4101
0101
9001
1101
1021
6101
5101
1101
1014
923

WILSON AV

4	532
07	1106
11	1110
15	1114
19	1118
25	1122
29	1128
03	1202
07	1206
11	1210
21	533

SUMNER ST

610	624
1107	1106
1111	1110
1115	1114
1119	1118
1125	1122
1129	1120
1203	1202
1207	1206
1211	1210
605	615

CHASE ST

704	724
1107	
1111	1110
1115	1114
1121	1118
1127	1124
1131	1128
1203	1202
1205	1204
1209	
705	723

FISCHER ST

804	824
1107	1108
1111	1114
1115	1120
1121	1126
1127	1130
1131	1130
1203	1202
1205	1208
1209	
805	821

GRANT ST

904	924
1107	1106
1113	1110
1119	1114
1123	
1127	1122
1131	1130
1203	1204
1207	1208
905	921

DAWES AV

4201
8101
4101
0101
9001
326
5201
6101
5101
1101
1001
426

0201
8101
4101
0101
9001
1101
1021
6101
5101
1101
1014
923

ELM ST

0201
8101
4101
0101
9001
1101
1023
6111
1023
6111

COOLIDGE A

1219
1007
1001
1101
1015
1019
1023
1203
9006
1001
1101
1018
1018
1019
1023

DAWES AV

1219
1007
1001
1101
1015
1019
1023
1203
9006
1001
1101
1018
1018
1019
1023

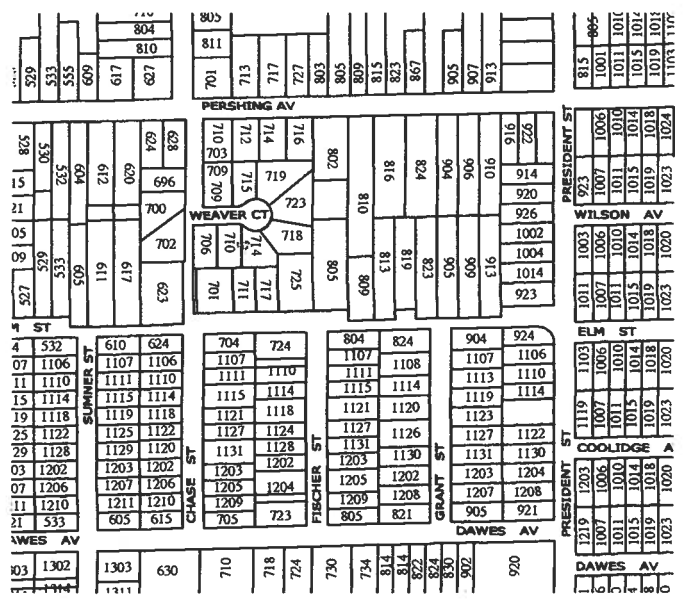
WES AV

1303
1314

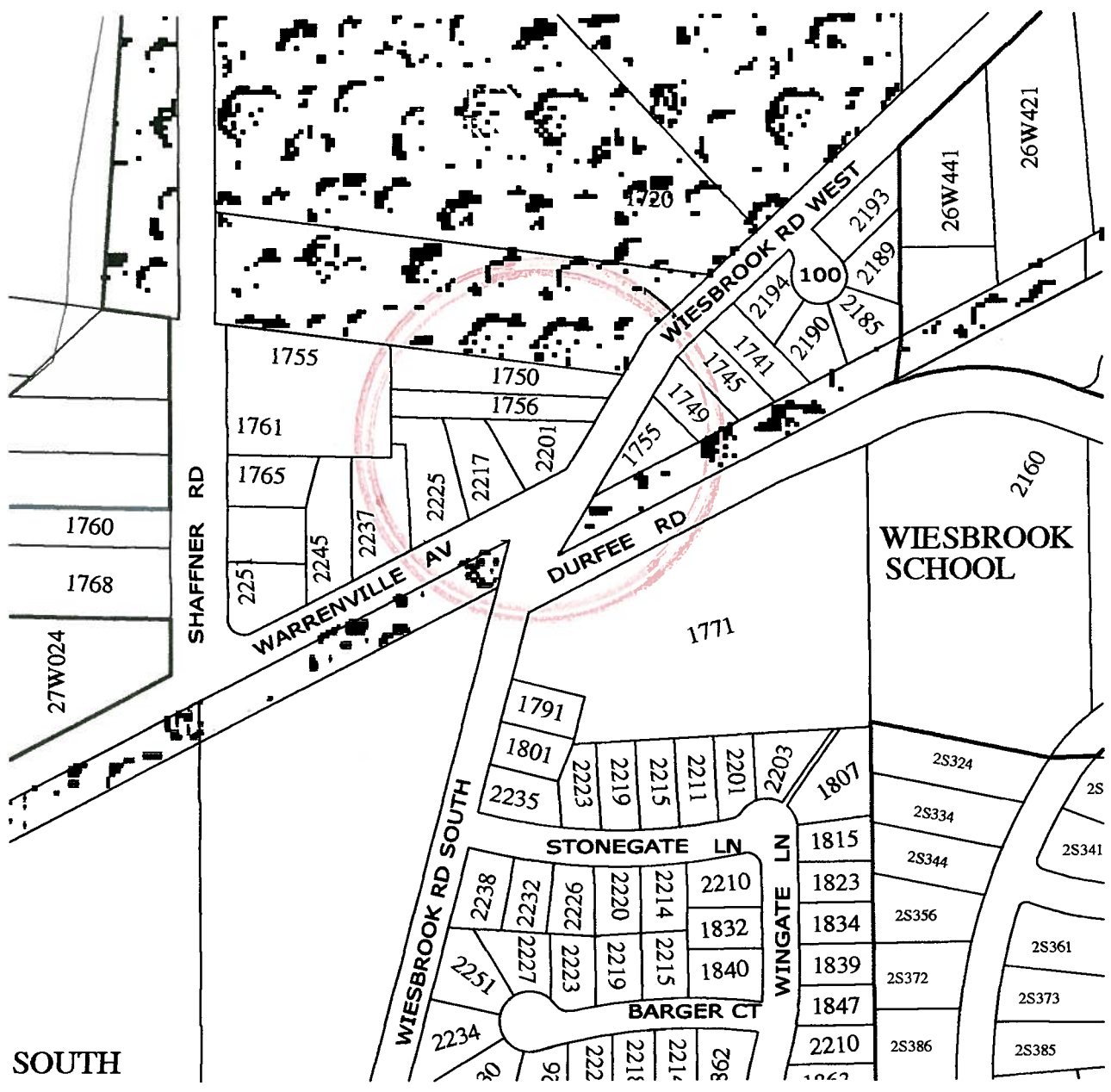
1303
630
017
817
427
730
734
818
818
822
824
830
902
920
920

1219
1007
1001
1101
1015
1019
1023
1203
9006
1001
1101
1018
1018
1019
1023

#2
 1" = 600'

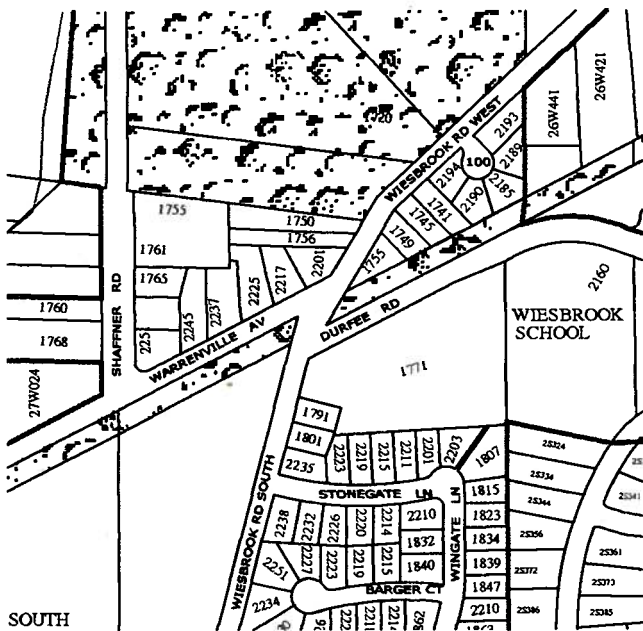


3



#3

1" = 600'



SOUTH