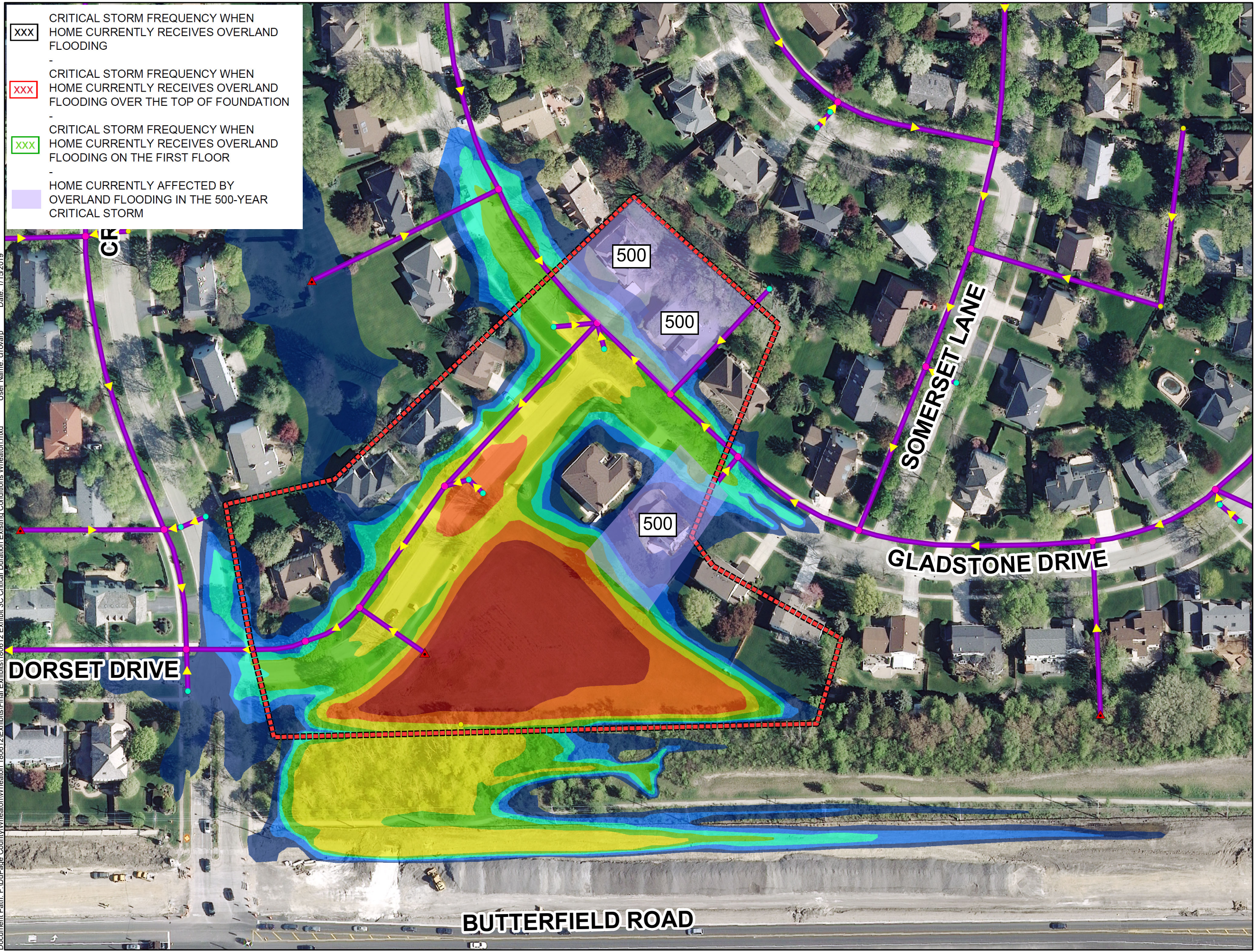


Document Path: F:\DuPage County\Wheaton\Wheaton 180612\Exhibits\Final Exhibits\180612 Exhibit 3C Critical Duration Existing Conditions Wheaton.mxd Date: 11/15/2019 User Name: cdrovamp



- xxx CRITICAL STORM FREQUENCY WHEN HOME CURRENTLY RECEIVES OVERLAND FLOODING
- xxx CRITICAL STORM FREQUENCY WHEN HOME CURRENTLY RECEIVES OVERLAND FLOODING OVER THE TOP OF FOUNDATION
- xxx CRITICAL STORM FREQUENCY WHEN HOME CURRENTLY RECEIVES OVERLAND FLOODING ON THE FIRST FLOOR
- HOME CURRENTLY AFFECTED BY OVERLAND FLOODING IN THE 500-YEAR CRITICAL STORM

EXHIBIT 3.C CRITICAL DURATION EXISTING FLOODING RIDGE PARK WHEATON, IL

- ## Legend
- ### Project Area
- [Red dashed box icon]
- ### Storm Structures
- Type of Structure
- [Blue circle icon] Catch Basin
 - [Blue square icon] Control Structure
 - [Red triangle icon] Discharge Point
 - [Yellow dot icon] Inlet
 - [Pink dot icon] Manhole
 - [Purple line with arrow icon] Storm Sewer
- ### Existing Conditions Flooding
- Storm
- [Red area icon] 1-Year Storm (2-Hour)
 - [Orange area icon] 5-Year Storm (2-Hour)
 - [Yellow area icon] 10-Year Storm (2-Hour)
 - [Light green area icon] 25-Year Storm (2-Hour)
 - [Medium green area icon] 50-Year Storm (2-Hour)
 - [Light blue area icon] 100-Year Storm (2-Hour)
 - [Dark blue area icon] 500-Year Storm (2-Hour)

ENGINEERING
RESOURCE ASSOCIATES

1 inch = 100 feet