

COPY

computer?  
not in



# Memorandum

*Tyler S. Ferguson*  
*Development Engineer*

**To:** *All Address Map Holders*

**Date:** *January 31, 2005*

**Re:** *City of Wheaton Address Map Changes*

Listed below are official changes to the City of Wheaton Address Map:

<b>Old Address</b>	<b>New Address</b>
1. 502 Blanchard Road	500 S. Blanchard Street
2. 602 Chase Court	603 College Avenue
3. 610 Chase Court	611 College Avenue
4. 2 S 545 Wiesbrook Road South This is a new two lot subdivision	Lot 1 = 1957 Wiesbrook Road South Lot 2 = 1977 Wiesbrook Road South
5. 225 S. Blanchard Road	1300 Avery Street
6. Parkview Court	New A – Lot Subdivision
7. 1504 E. Liberty	201 S. Summit
8. 306 Lorraine Road	300 Lorraine Road

Attached is a copy of the City map indicating the changes.

**Cc:** DuComm  
Director of Engineering  
Director of Public Works  
Chief of Police  
Fire Chief  
Water Services Manager  
Street Services Manager  
Water Billing  
GIS  
Code Compliance Officer  
Media Manager  
Director of Finance  
Public Works Engineer  
Director of Building and Code Enforcement

# 1

D (T I R E F I R E H I L L) L (K 1521)

18  
5  
0  
4  
3  
2  
2  
5  
2  
4  
3  
2  
3  
9

WILLISTON ST

403	402
407	406
411	410
415	414
419	418
423	422
503	502
507	506
511	510
515	514
519	518
523	522
529	528
1205	1207

BYRON CT

1304	402
407	406
411	410
415	414
418	418
423	422
503	500
507	506
511	510
515	514
519	518
523	522
525	528
1307	1321

BLANCHARD ST

1402	402
407	408
413	412
419	416
423	422
503	502
507	506
511	510
515	516
521	522
1401	
1407	
1411	

SUMMIT ST

1502	402
407	406
413	412
417	416
423	422
503	502
507	506
511	510
517	514
523	522
1503	1522

EVERGREEN ST

909  
7

1201	1202
1205	1206
1209	1210
1213	1214
1217	1218
1301	1302
1305	1306
1309	1310
1315	1314
1317	1318
1321	604

627	1402
1407	1408
1411	1414
1415	1418
1419	1502
	1506
1501	1512
1511	1516
1517	1520
628	

#1

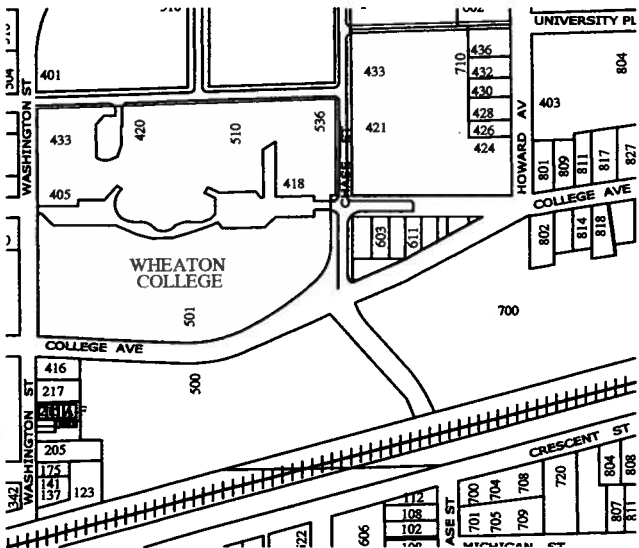
18	403	402	1304	402	1402	402	1502	402
5	407	406	407	406	407	408	407	406
0	411	410	411	410	413	412	413	412
1	415	414	415	414	419	416	417	416
2	419	418	419	418	423	422	423	422
3	423	422	423	422	503	502	503	502
4	503	502	503	500	507	506	507	506
5	507	506	507	506	511	510	511	510
6	511	510	511	510	515	516	517	514
7	515	514	515	514	521	522	523	522
8	519	518	519	518	1307	1321	1503	1522
9	523	522	523	522				
0	529	528	529	528				
1	1205	1207						

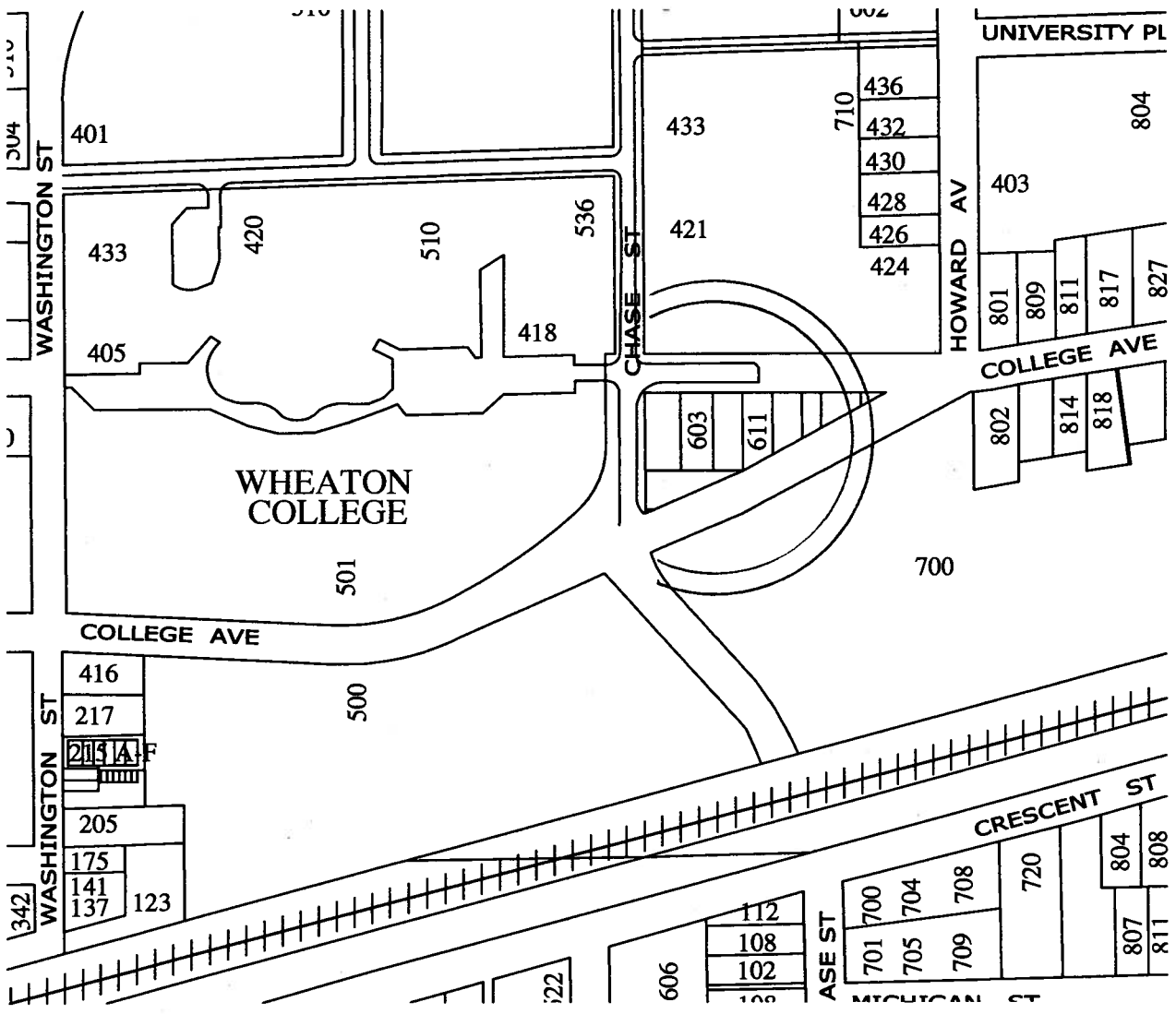
WILLISTON ST  
BYRON CT  
BLANCHARD ST  
BURKETT ST

101	1402	1502
107	1407	1506
108	1411	1512
113	1416	1516
114	1419	1517
115		1518
116		1519
117		1520
118		
119		
120		
121		
122		
123		
124		
125		
126		
127		
128		
129		
130		
131		
132		
133		
134		
135		
136		
137		
138		
139		
140		
141		
142		
143		
144		
145		
146		
147		
148		
149		
150		
151		
152		
153		
154		
155		
156		
157		
158		
159		
160		

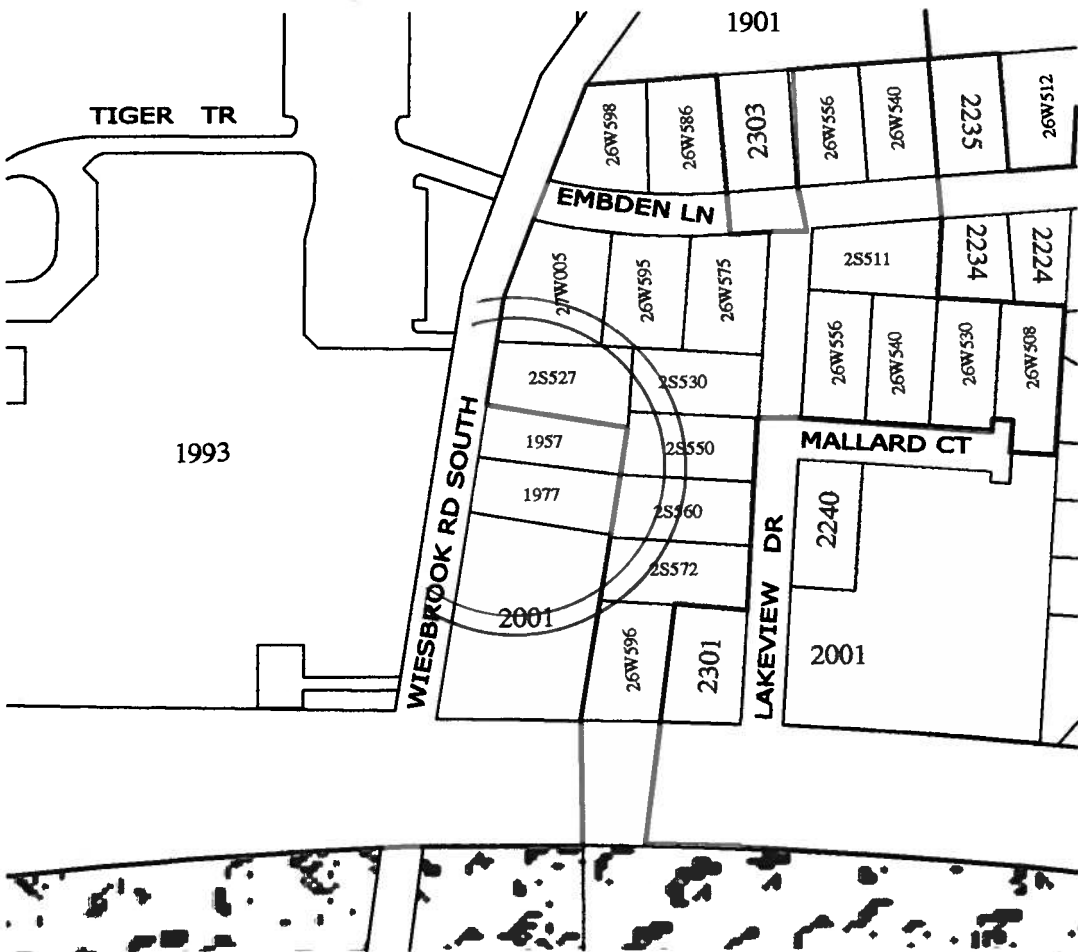
EVERGREEN ST

213

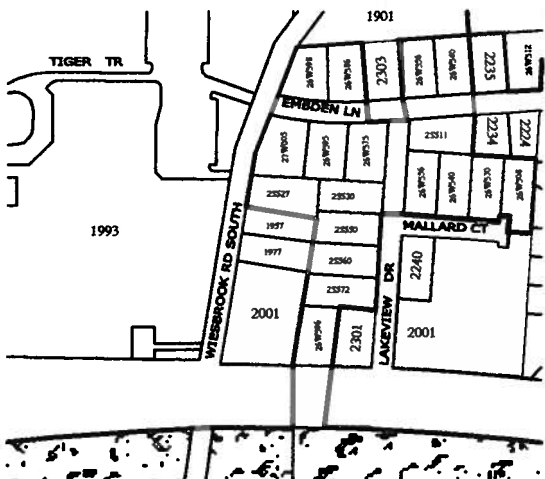




#4



# 4  
1

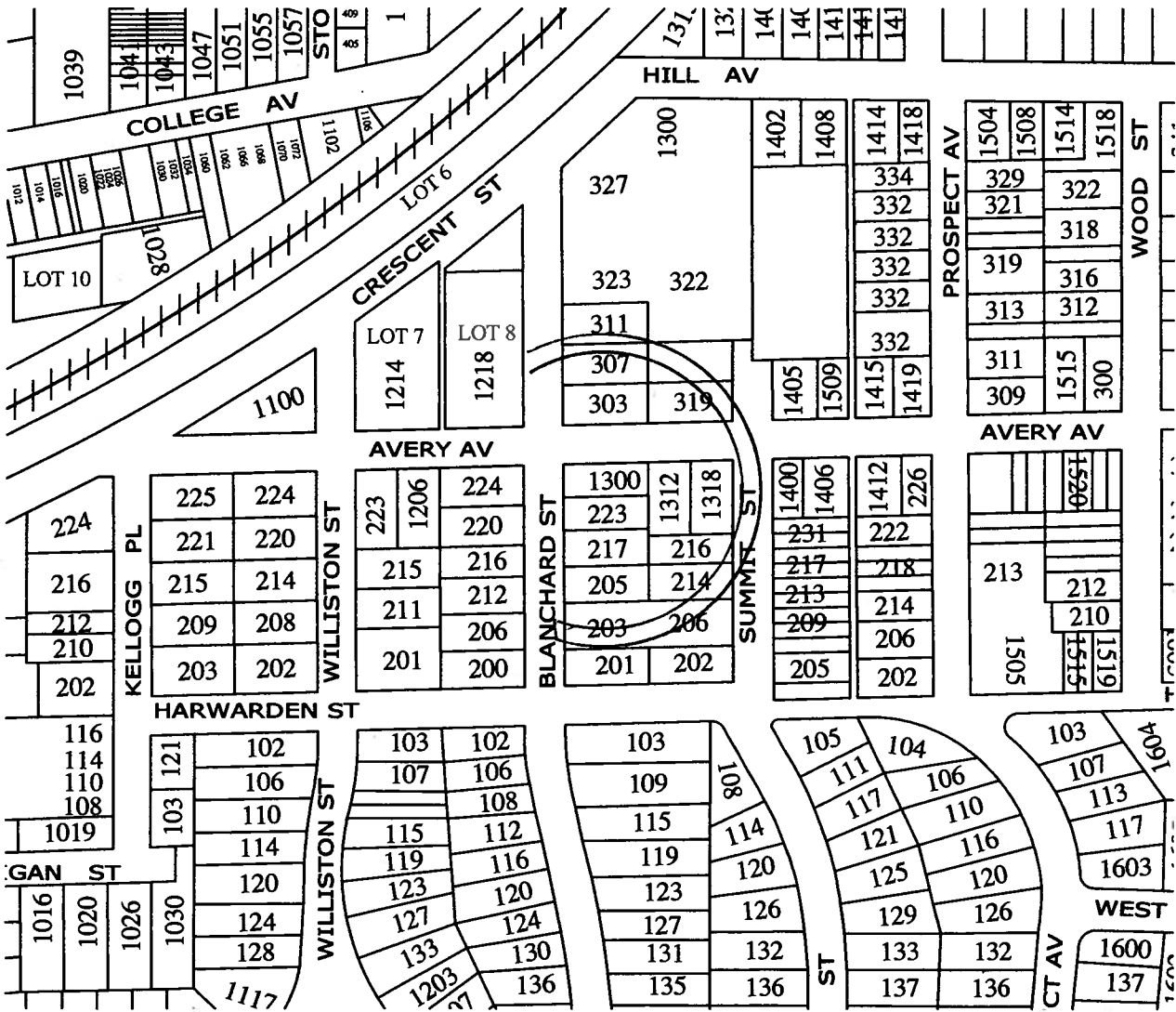


#5

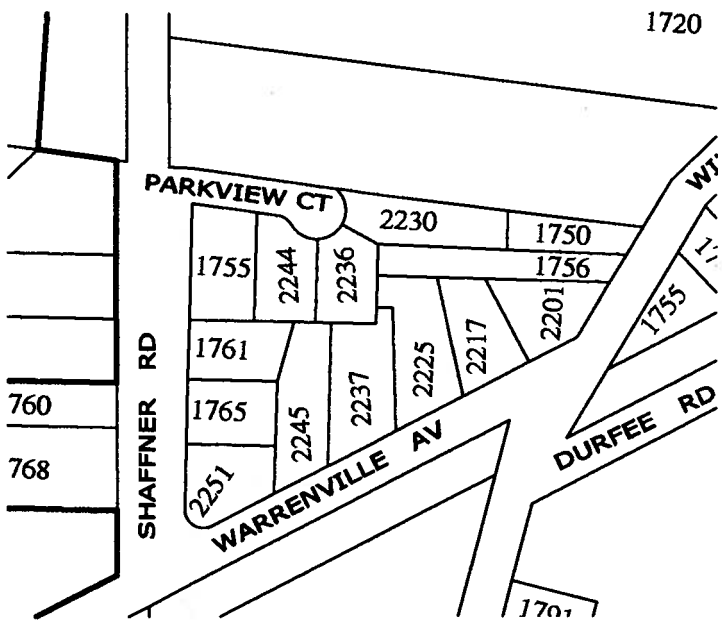




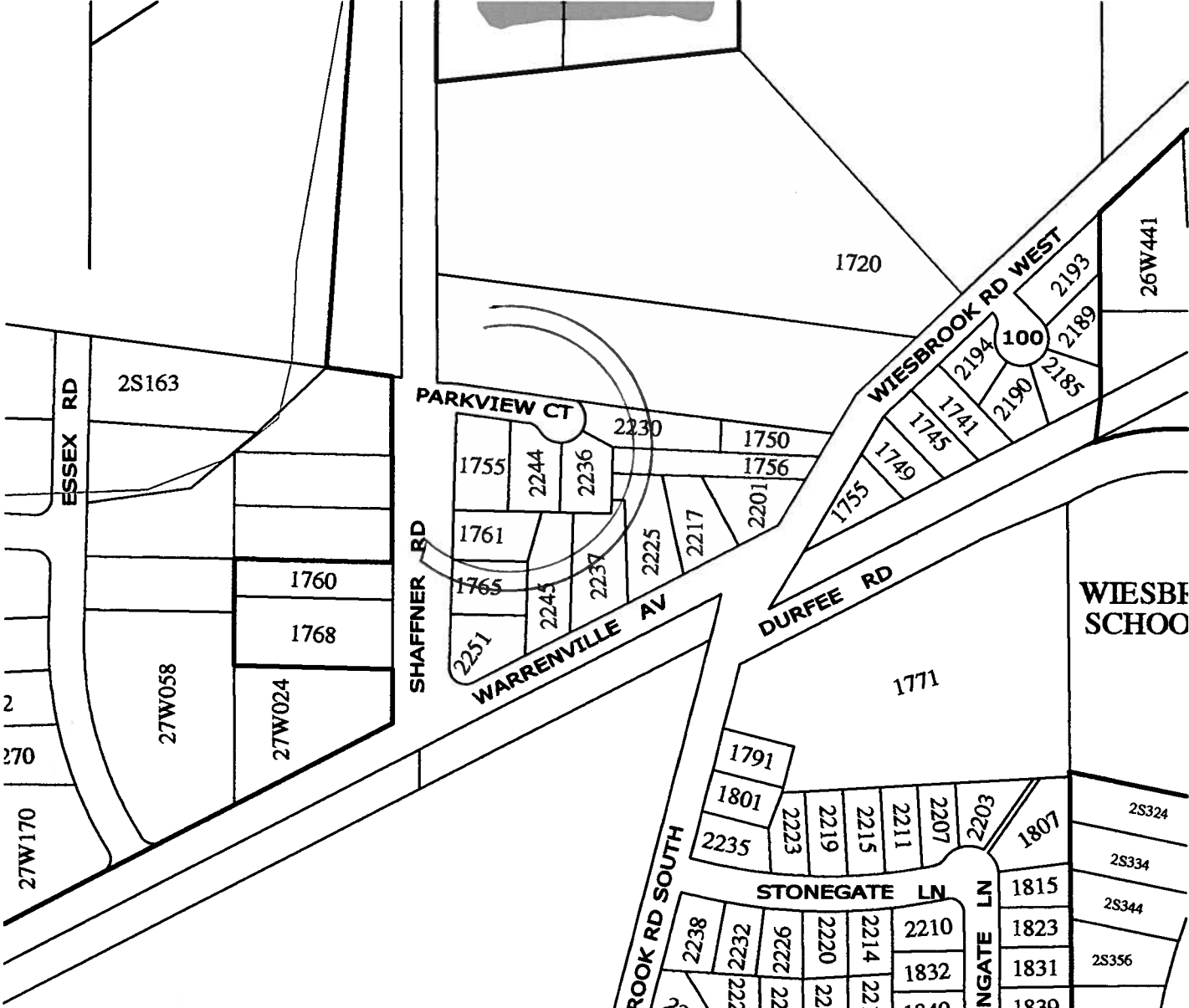
# 5



6

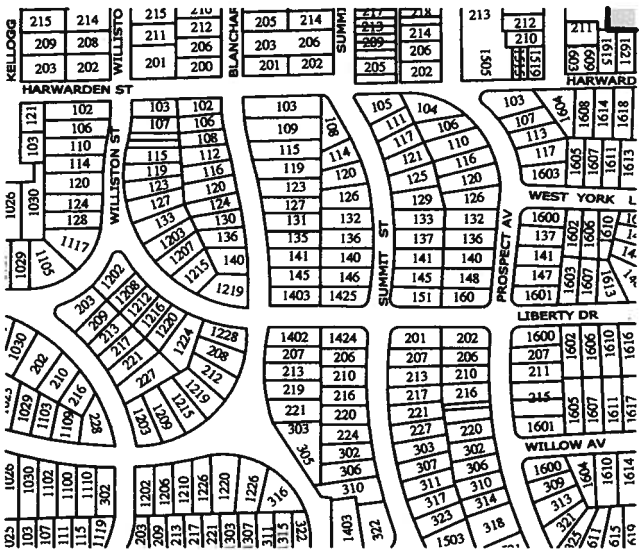


6



WIESBE  
SCHOO



# 7

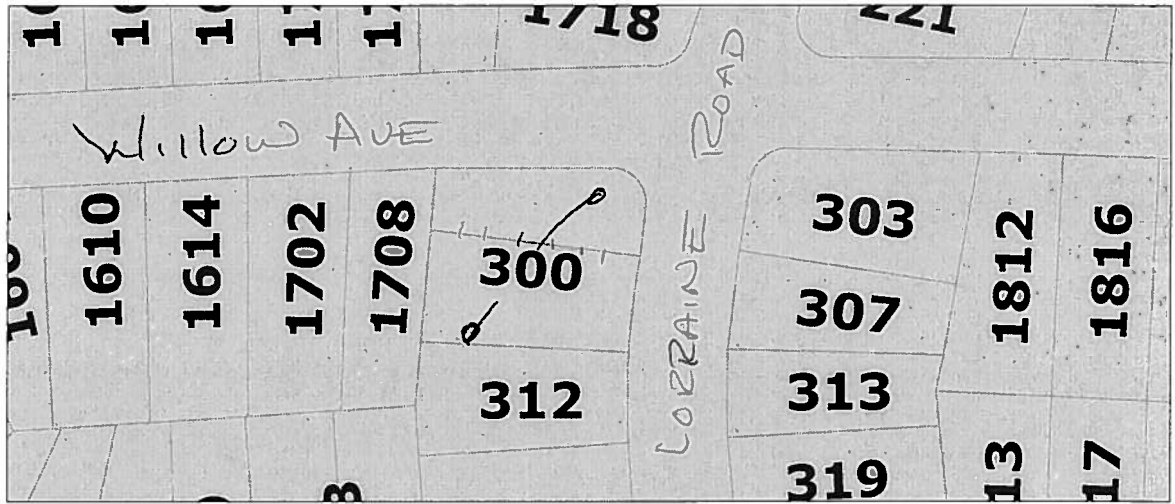


# 7



# City of Wheaton GIS

Abc	Address
--	Paths
---	Private Roads
+++	Railroad
Abc	Street Names
	Parcels
...	Municipalities
	CAROL ST...
	DOWNER...
	GLEN ELL...
	LISLE
	LOMBARD



SCALE 1 : 1,601

