

ORDINANCE NO. F-1515

AN ORDINANCE AMENDING CITY OF WHEATON ORDINANCE NO. E-3704, "AN ORDINANCE AMENDING THE WHEATON ZONING ORDINANCE MAP AND GRANTING A SPECIAL USE PERMIT FOR A PLANNED UNIT DEVELOPMENT ON A CERTAIN PIECE OF PROPERTY COMMONLY LOCATED SOUTHEAST OF THE INTERSECTION OF COUNTY FARM AND MANCHESTER ROADS, BETWEEN MANCHESTER ROAD AND FAPP CIRCLE - WYNDEMERE RETIREMENT COMMUNITY/ CENTRAL DU PAGE HEALTH SYSTEM" ("ORIGINAL ORDINANCE"); AND ORDINANCES NOS. E-3729 AND E-4007 AND F-0060 AND F-0164 WHICH AMENDED THE ORIGINAL ORDINANCE - WYNDEMERE LLC

WHEREAS, the City of Wheaton, Illinois ("CITY"), has previously enacted City Ordinance No. E-3704, ("ORIGINAL ORDINANCE") recorded on July 10, 1991 as Document Number R91-86762 in the Office of the Du Page County Recorder of Deeds; Ordinance No. E-3729 recorded on January 14, 1992 as Document Number R92-7951 in the Office of the Du Page County Recorder of Deeds; Ordinance No. E-4007 recorded on July 11, 1994 as Document Number R94-149554 in the Office of the Du Page County Recorder of Deeds; Ordinance No. F-0060 recorded on September 19, 1996 as Document Number R96-154187 in the Office of the Du Page County Recorder of Deeds; and Ordinance No. F-0164 recorded on October 9, 1997 as Document Number R97-154112 in the Office of the Du Page County Recorder of Deeds; authorizing the construction and use of an independent living/ congregate care facility with 342 independent living units, 40 assisted living units, 26 townhomes, for a total of 408 living units, and a 102-bed licensed health care facility on the property legally described on Exhibit A, attached hereto, and commonly known as 200 Wyndemere Circle, Wheaton, Illinois; and

WHEREAS, thereafter, the City enacted Ordinance Nos. E-3729 and E-4007 and F-0060 and F-0164 amending the ORIGINAL ORDINANCE in various ways; and

WHEREAS, application has now been made to amend the special use permit for planned unit development approved by the ORIGINAL ORDINANCE, and thereafter amended, in order to allow the construction and use of a one-story dining room addition adjacent to the buildings existing dining room space; and the City determined that the requested amendment is a minor amendment and may be implemented without public hearing, pursuant to the provisions of Section 5.10.6 of the Wheaton Zoning Ordinance.

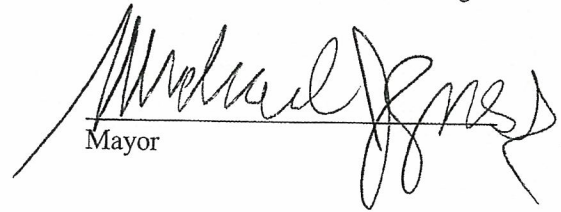
NOW, THEREFORE, BE IT ORDAINED by the City Council of the City of Wheaton, Du Page County, Illinois, pursuant to its home rule powers, as follows:

Section 1: The special use permit for the planned unit development granted by the ORIGINAL ORDINANCE is amended to allow the construction and use of a one-story dining room addition adjacent to the buildings existing dining room space in full compliance with the site plan, elevations and floor plan dated August 27, 2010, prepared by AG Architecture, Wauwatosa, Wisconsin.

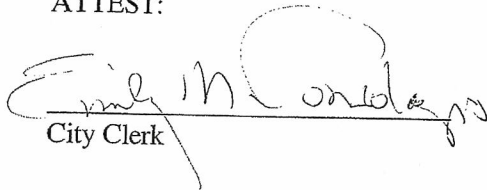
Section 2: In all other respects, the terms and provisions of the ORIGINAL ORDINANCE and Ordinance Nos. E-3729, E-4007, F-0060 and F-0164 are ratified and remain in full force and effect.

Section 3: All ordinances or parts of ordinances in conflict with these provisions are repealed.

Section 4: This ordinance shall become effective from and after its passage, approval, and publication in pamphlet form in the manner prescribed by law.


Mayor

ATTEST:


City Clerk

Roll Call Vote

Ayes: Councilman Suess
Councilwoman Corry
Councilman Levine
Councilman Mouhelis
Mayor Gresk
Councilman Prendiville
Councilman Scalzo

Nays: None

Absent: None

Motion Carried Unanimously

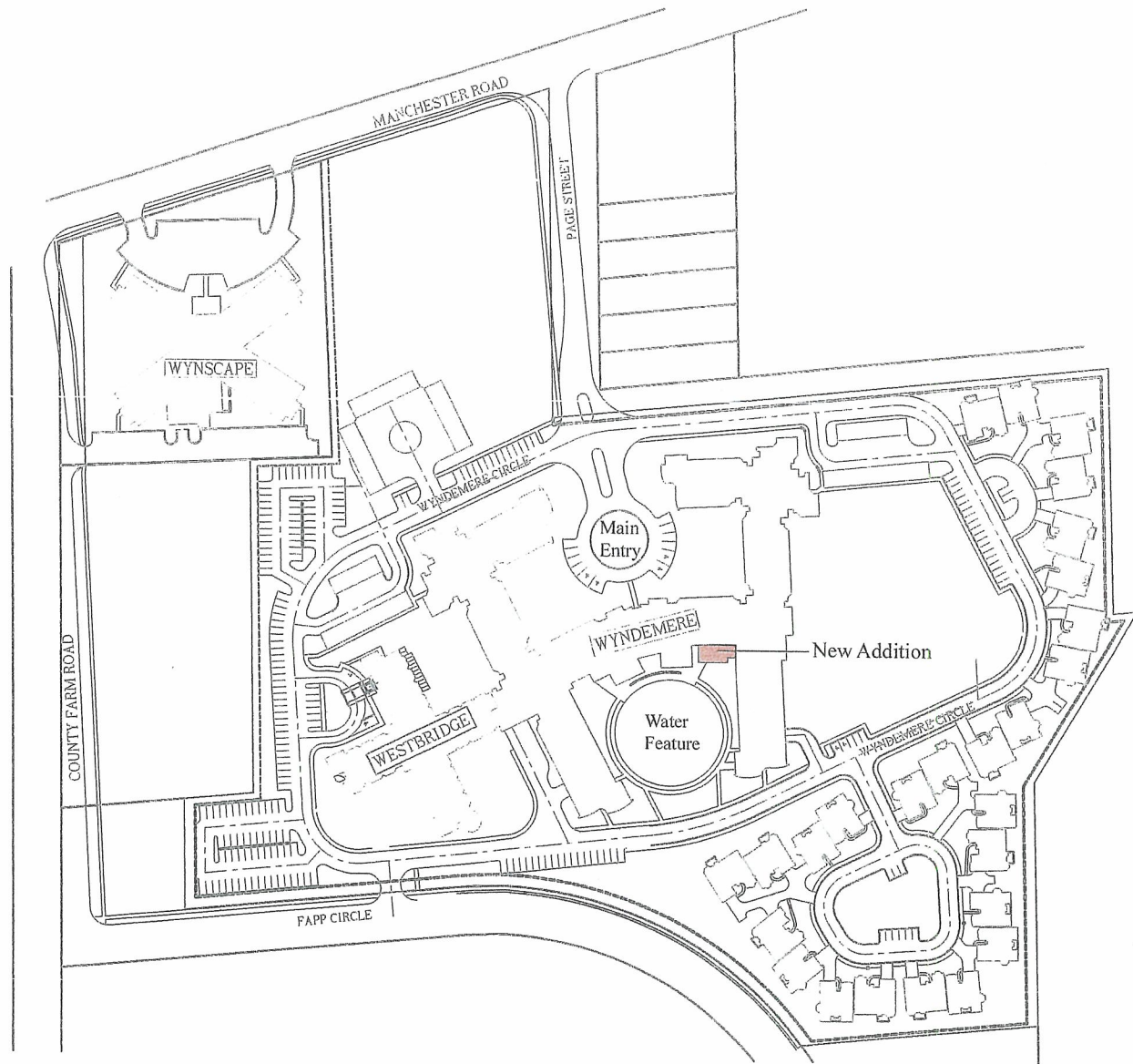
Passed: October 4, 2010
Published: October 5, 2010

EXHIBIT A

LOT 1 IN WYNDEMERE SUBDIVISION, BEING A SUBDIVISION OF THAT PART OF SECTION 18, TOWNSHIP 39 NORTH, RANGE 10, EAST OF THE THIRD PRINCIPAL MERIDIAN, ACCORDING TO THE PLAT RECORDED IN DU PAGE COUNTY, ILLINOIS AS DOCUMENT NO. R95-004357.

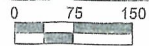
The subject property is commonly known as 200 Wyndemere Circle, Wheaton, IL 60187.

P.I.N. 05-18-439-033



WYNDEMERE - SENIOR LIVING CAMPUS

Date: 08/27/2010



EXISTING SITE DEVELOPMENT PLAN

A1



Wyndemere
Addition



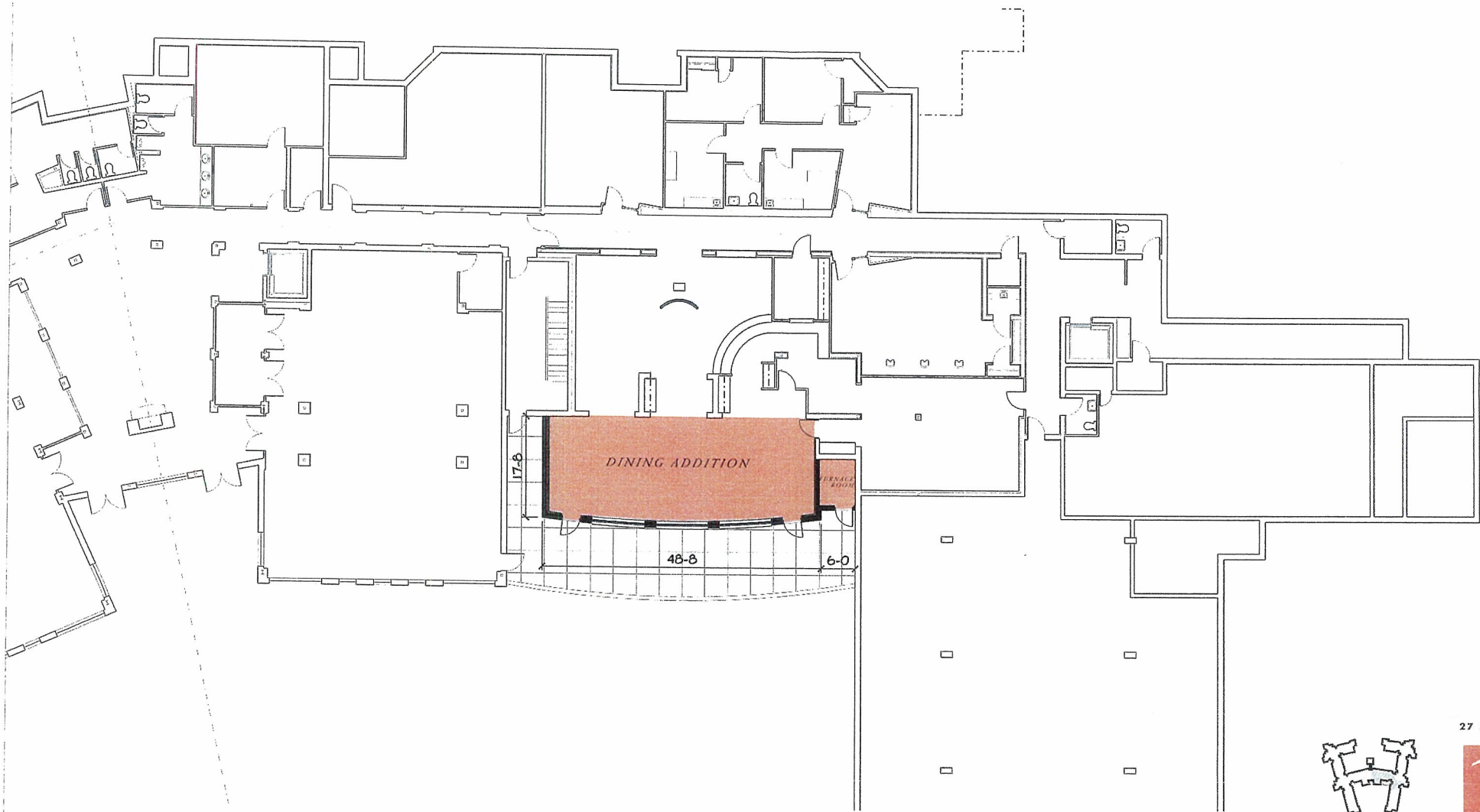
Wyndemere
Addition



Wyndemere
Addition with Patio Screen Wall



Wyndemere
Addition with Patio Screen Wall



Wyndemere Retirement Community
CAFE/BISTRO REMODELING
Wheaton, Illinois



27 Aug 2010



1/4" = 1'-0"