

**MEMORANDUM**

**TO:** The Honorable Mayor and City Council

**FROM:** Tracy L. Jones, AICP, Staff Planner *TJ*  
Joseph E. Tebrugge, PE, Director of Engineering

**DATE:** February 17, 2026

**SUBJECT:** ZA #26-03/ Special Use/ 510 Irving Avenue/ Wheaton College

**Request**

Consideration of a special use permit pursuant to Article 14.1.3 of the Wheaton Zoning Ordinance to allow the construction and use of a one-story addition on the north side and a three-story addition on the south side of the existing Wheaton College Library. A special use permit is required to add an addition to an existing college or university building.

**Planning and Zoning Board Recommendation**

On Tuesday, January 27, 2026, the Planning and Zoning Board held a public hearing on this application and recommended approval of the special use request, with a 7-0 vote, subject to the condition that the engineering plan shall be subject to further staff review prior to the issuance of a site development permit.

**Background**

The Wheaton College Library, part of the Wheaton College campus, is situated on the west side of Irving Avenue, between Kenilworth and Union Avenues. The closest residential properties are located at the northeast corner of Irving and Kenilworth Avenues.

**Site Plan and Landscaping**

A small, one-story addition is proposed on the north side of the existing building. A three-story addition is further proposed on the south side of the existing building, following the demolition of the 1950's portion. The total square footage to be demolished is 26,830 square feet and the total square footage to be added is 28,578 square feet, resulting in a small net increase. The existing library would be fully renovated as part of this project and the existing Wheaton College parking lot to the north of the library will remain unchanged.

The project is fully code compliant with the bulk regulations contained in Article 14.2 of the Wheaton Zoning Ordinance.

New landscaping is planned around the north addition, which includes a shade tree and two types of deciduous shrubs. New landscaping is further planned around the south addition, which includes shade trees, ornamental trees, deciduous shrubs, evergreen shrubs, perennials, ground cover, and ornamental grasses.



WHEATON MAYOR PHILIP J. SUESS

CITY MANAGER MICHAEL DZUGAN

CITY COUNCIL: ERICA BRAY-PARKER | LEAH BRICE | SCOTT BROWN | BRADLEY CLOUSING | LYNN ROBBINS | SCOTT WELLER

**Floor Plan and Building Elevations**

The one-story addition includes a loading dock and electrical room on Level 1. The three-story addition includes classrooms, group study spaces, and a production space on the Lower Level; classrooms, consultations rooms, and a writing center on Level 1; and a reading room on Level 2. All new mechanical equipment will be fully screened from view.

The building will be clad with a combination of brick and stone veneer. Color elevations were provided at the public hearing that show a mix of red brick and limestone looking stone to complement other Wheaton College buildings, including Edmund Chapel.

**Engineering Department Comments**

The subject site does not contain a floodplain nor a wetland pursuant to the regulatory maps used for such determinations.

The proposed development triggers the City of Wheaton requirement to provide detention for the project. A preliminary stormwater report has been provided as a part of the planning and zoning submittal, and the proposed development will have all required detention subtracted from the Wheaton College Regional Detention Facility which still has excess storage available for the project.

The proposed development does not appear to meet the trigger to provide a Best Management Practice (BMP) to reduce pollutants in their stormwater discharge.

No traffic report was provided as a part of the submittal. The proposed building addition is not expected to generate any significant vehicular traffic nor affect the adjoining City roadway system. Additionally, no parking is being changed by the project.

The engineering plan shall be subject to further staff review prior to the issuance of a site development permit.

**Staff Recommendation**

Staff would recommend approval of the attached Ordinance granting the special use permit request, subject to the condition provided by the Board.

**ORDINANCE NO. O-2026-**

**AN ORDINANCE GRANTING A SPECIAL USE PERMIT TO ALLOW THE CONSTRUCTION AND USE OF A ONE-STORY ADDITION ON THE NORTH SIDE AND A THREE-STORY ADDITION ON THE SOUTH SIDE OF THE EXISTING WHEATON COLLEGE LIBRARY, ALL ON A CERTAIN PIECE OF PROPERTY COMMONLY KNOWN AS 510 IRVING AVENUE - WHEATON COLLEGE**

**WHEREAS**, written application has been made requesting a special use permit pursuant to Article 14.1.3 of the Wheaton Zoning Ordinance to allow the construction and use of a one-story addition on the north side and a three-story addition on the south side of the existing Wheaton College Library, all on certain property legally described herein and commonly known as 510 Irving Avenue, Wheaton, Illinois 60187; and

**WHEREAS**, pursuant to notice as required by the Illinois Municipal Code and the Wheaton Zoning Ordinance, a public hearing was conducted by the Wheaton Planning and Zoning Board on January 27, 2026, to consider the special use permit; and the Planning and Zoning Board has recommended approval of the special use permit.

**NOW, THEREFORE, BE IT ORDAINED** by the Mayor and City Council of the City of Wheaton, Du Page County, Illinois, pursuant to its home rule powers, as follows:

**Section 1:** The following described property has been and continues to be zoned and classified in the I-1 Institutional District zoning classification:

PART OF LOTS 38 THROUGH 42, BOTH INCLUSIVE, IN THE COUNTY CLERKS ASSESSMENT DIVISION OF THE NORTH ½ OF THE NORTHEAST ¼ OF SECTION 16, TOWNSHIP 39 NORTH, RANGE 10 EAST OF THE THIRD PRINCIPAL MERIDIAN, ACCORDING TO THE PLAT THEREOF RECORDED SEPTEMBER 4, 1912, AS DOCUMENT NUMBER 109216, IN DUPAGE COUNTY, ILLINOIS, AND ALSO, PART OF LOTS 1 THROUGH 3, BOTH INCLUSIVE, AND LOT 7 IN BLOCK 4 OF ILLINOIS INSTITUTE 2<sup>ND</sup> ADDITION TO THE TOWN OF WHEATON, BEING A SUBDIVISION OF THE NORTHEAST ¼ OF SECTION 16, TOWNSHIP 39 NORTH, RANGE 10 EAST OF THE THIRD PRINCIPAL MERIDIAN, ACCORDING TO THE PLAT THEREOF RECORDED DECEMBER 3, 1857 AS DOCUMENT NUMBER R1857-011972, IN DUPAGE COUNTY, ILLINOIS.

P.I.N.: 05-16-207-007; -008; -009; -017; -018; -019; -020

The subject property is commonly known as 510 Irving Avenue, Wheaton, IL 60187.

**Section 2:** Pursuant to the Findings of Fact made and determined by the Wheaton Planning and Zoning Board, a special use permit pursuant to Article 14.1.3 of the Wheaton Zoning Ordinance to allow the construction and use of a one-story addition on the north side and a three-story addition on the south side of the existing Wheaton College Library constructed in the 1970's, following the demolition of the 1950's portion, in full compliance with the following plans: "Preliminary Engineering and Landscape Plans for: Wheaton College Library", prepared by WMA, Wheaton, IL, dated September 27, 2024 and revised October 31, 2025, sheets C-2, C-3, C-5, C-4, and L-1 and "Wheaton College Library and Learning Center", prepared by SCB, Chicago, IL, dated September 27, 2024 and revised October 24, 2025, sheets 1-6; and subject to the condition that the engineering plan shall be subject to further staff review prior to the issuance of a site development permit.

**Section 3:** The demolition of a portion of the Wheaton College Library located at 510 Irving Avenue is hereby authorized by this ordinance. Said demolition shall be carried out in conformance with Wheaton City Code Chapter 22, Article XIV, with the exception that the owner shall not be required to send written notification to the adjacent property owners via certified mail at least 14 days prior to submitting an application for building demolition.

**Section 4:** All ordinances or parts of ordinances in conflict with these provisions are repealed.

**Section 5:** This ordinance shall become effective from and after its passage, approval, and publication in pamphlet form in the manner prescribed by law.

---

Mayor

ATTEST:

---

City Clerk

**Roll Call Vote:**

Ayes:

Nays:

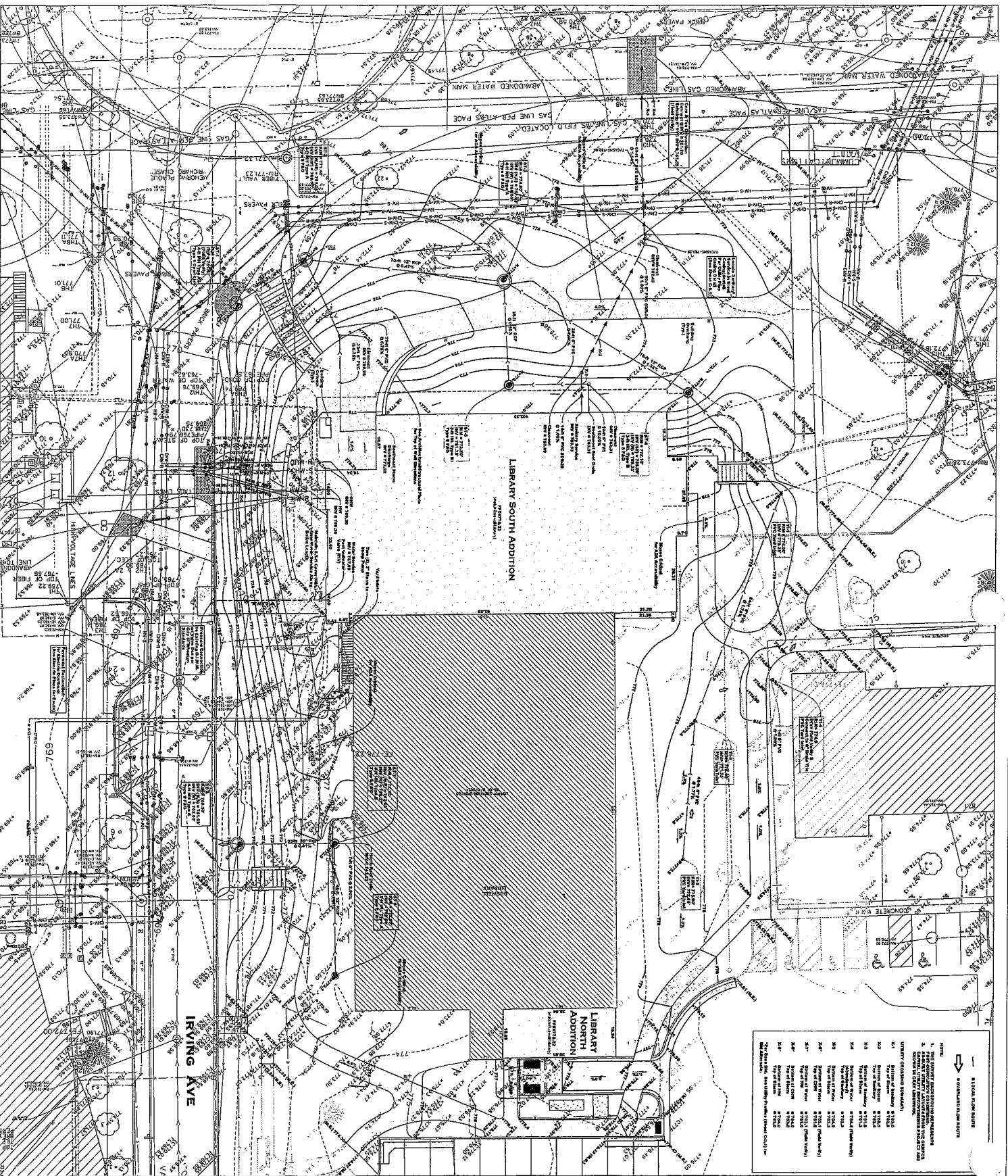
Absent:

Passed:


Published:








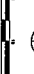
1. THE OWNER OF THE PROJECT IS WHEATON COLLEGE, 1000 N. WHEATON AVE., WHEATON, ILL. 60187.
2. THE PROJECT IS THE NORTH ADDITION TO THE EXISTING LIBRARY BUILDING, 1000 N. WHEATON AVE., WHEATON, ILL. 60187.
3. THE PROJECT IS THE NORTH ADDITION TO THE EXISTING LIBRARY BUILDING, 1000 N. WHEATON AVE., WHEATON, ILL. 60187.
4. THE PROJECT IS THE NORTH ADDITION TO THE EXISTING LIBRARY BUILDING, 1000 N. WHEATON AVE., WHEATON, ILL. 60187.
5. THE PROJECT IS THE NORTH ADDITION TO THE EXISTING LIBRARY BUILDING, 1000 N. WHEATON AVE., WHEATON, ILL. 60187.
6. THE PROJECT IS THE NORTH ADDITION TO THE EXISTING LIBRARY BUILDING, 1000 N. WHEATON AVE., WHEATON, ILL. 60187.
7. THE PROJECT IS THE NORTH ADDITION TO THE EXISTING LIBRARY BUILDING, 1000 N. WHEATON AVE., WHEATON, ILL. 60187.
8. THE PROJECT IS THE NORTH ADDITION TO THE EXISTING LIBRARY BUILDING, 1000 N. WHEATON AVE., WHEATON, ILL. 60187.
9. THE PROJECT IS THE NORTH ADDITION TO THE EXISTING LIBRARY BUILDING, 1000 N. WHEATON AVE., WHEATON, ILL. 60187.
10. THE PROJECT IS THE NORTH ADDITION TO THE EXISTING LIBRARY BUILDING, 1000 N. WHEATON AVE., WHEATON, ILL. 60187.



**WMA**  
WHEATON, ILLINOIS 60187



1" = 20'



1" = 20'

**WHEATON COLLEGE**  
LIBRARY

GRADING & UTILITY PLAN

DATE: 10/1/87

PROJECT: 300000

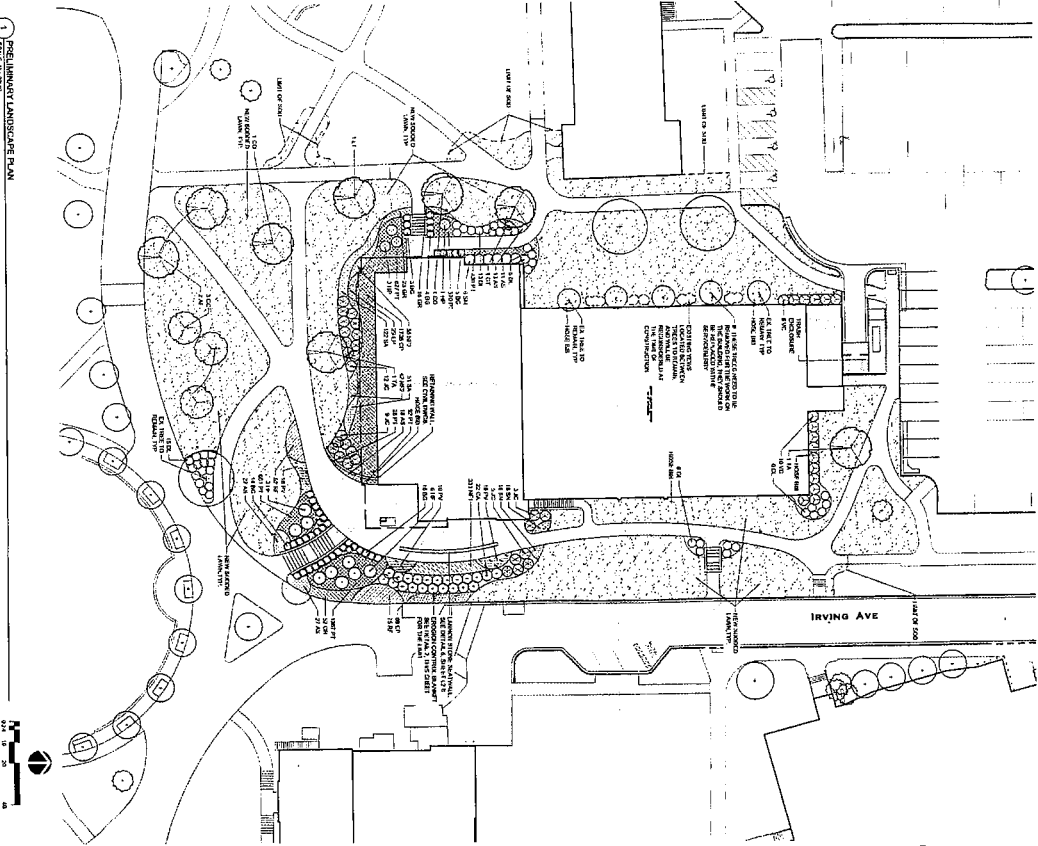
SCALE: C-3.0

NO.	DESCRIPTION	DATE	BY	CHECKED
1	PREPARED BY ENGINEER	10/1/87	J. J. JONES	J. J. JONES
2	REVIEWED BY ENGINEER	10/1/87	J. J. JONES	J. J. JONES
3	APPROVED BY ENGINEER	10/1/87	J. J. JONES	J. J. JONES

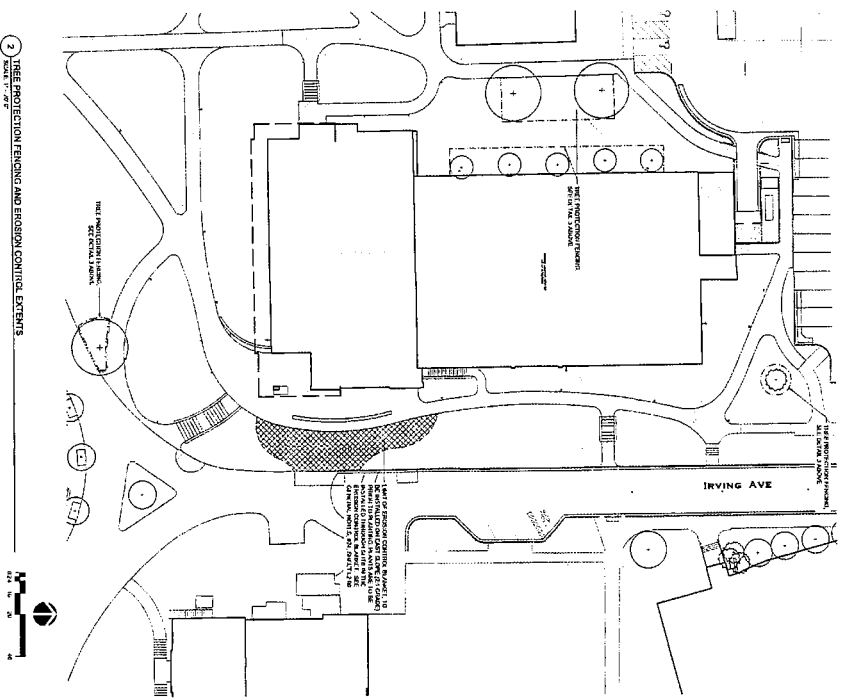




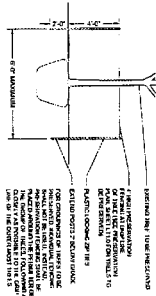
1 PRELIMINARY LANDSCAPE PLAN  
SCALE: 1" = 20'



2 TREE PROTECTION FENCING AND EROSION CONTROL EXTENTS  
SCALE: 1" = 20'



3 TREE PRESERVATION DETAIL - SNOW FENCE FENCING  
SCALE: 1" = 20'



**PLANT LIST**

NO.	SYMBOL	COMMON NAME	SCIENTIFIC NAME	SIZE	QUANTITY	NOTES
1	(Symbol)	PLANTING SPECIFICATION				
2	(Symbol)	PLANTING SPECIFICATION				
3	(Symbol)	PLANTING SPECIFICATION				
4	(Symbol)	PLANTING SPECIFICATION				
5	(Symbol)	PLANTING SPECIFICATION				
6	(Symbol)	PLANTING SPECIFICATION				
7	(Symbol)	PLANTING SPECIFICATION				
8	(Symbol)	PLANTING SPECIFICATION				
9	(Symbol)	PLANTING SPECIFICATION				
10	(Symbol)	PLANTING SPECIFICATION				
11	(Symbol)	PLANTING SPECIFICATION				
12	(Symbol)	PLANTING SPECIFICATION				
13	(Symbol)	PLANTING SPECIFICATION				
14	(Symbol)	PLANTING SPECIFICATION				
15	(Symbol)	PLANTING SPECIFICATION				
16	(Symbol)	PLANTING SPECIFICATION				
17	(Symbol)	PLANTING SPECIFICATION				
18	(Symbol)	PLANTING SPECIFICATION				
19	(Symbol)	PLANTING SPECIFICATION				
20	(Symbol)	PLANTING SPECIFICATION				
21	(Symbol)	PLANTING SPECIFICATION				
22	(Symbol)	PLANTING SPECIFICATION				
23	(Symbol)	PLANTING SPECIFICATION				
24	(Symbol)	PLANTING SPECIFICATION				
25	(Symbol)	PLANTING SPECIFICATION				
26	(Symbol)	PLANTING SPECIFICATION				
27	(Symbol)	PLANTING SPECIFICATION				
28	(Symbol)	PLANTING SPECIFICATION				
29	(Symbol)	PLANTING SPECIFICATION				
30	(Symbol)	PLANTING SPECIFICATION				
31	(Symbol)	PLANTING SPECIFICATION				
32	(Symbol)	PLANTING SPECIFICATION				
33	(Symbol)	PLANTING SPECIFICATION				
34	(Symbol)	PLANTING SPECIFICATION				
35	(Symbol)	PLANTING SPECIFICATION				
36	(Symbol)	PLANTING SPECIFICATION				
37	(Symbol)	PLANTING SPECIFICATION				
38	(Symbol)	PLANTING SPECIFICATION				
39	(Symbol)	PLANTING SPECIFICATION				
40	(Symbol)	PLANTING SPECIFICATION				
41	(Symbol)	PLANTING SPECIFICATION				
42	(Symbol)	PLANTING SPECIFICATION				
43	(Symbol)	PLANTING SPECIFICATION				
44	(Symbol)	PLANTING SPECIFICATION				
45	(Symbol)	PLANTING SPECIFICATION				
46	(Symbol)	PLANTING SPECIFICATION				
47	(Symbol)	PLANTING SPECIFICATION				
48	(Symbol)	PLANTING SPECIFICATION				
49	(Symbol)	PLANTING SPECIFICATION				
50	(Symbol)	PLANTING SPECIFICATION				
51	(Symbol)	PLANTING SPECIFICATION				
52	(Symbol)	PLANTING SPECIFICATION				
53	(Symbol)	PLANTING SPECIFICATION				
54	(Symbol)	PLANTING SPECIFICATION				
55	(Symbol)	PLANTING SPECIFICATION				
56	(Symbol)	PLANTING SPECIFICATION				
57	(Symbol)	PLANTING SPECIFICATION				
58	(Symbol)	PLANTING SPECIFICATION				
59	(Symbol)	PLANTING SPECIFICATION				
60	(Symbol)	PLANTING SPECIFICATION				
61	(Symbol)	PLANTING SPECIFICATION				
62	(Symbol)	PLANTING SPECIFICATION				
63	(Symbol)	PLANTING SPECIFICATION				
64	(Symbol)	PLANTING SPECIFICATION				
65	(Symbol)	PLANTING SPECIFICATION				
66	(Symbol)	PLANTING SPECIFICATION				
67	(Symbol)	PLANTING SPECIFICATION				
68	(Symbol)	PLANTING SPECIFICATION				
69	(Symbol)	PLANTING SPECIFICATION				
70	(Symbol)	PLANTING SPECIFICATION				
71	(Symbol)	PLANTING SPECIFICATION				
72	(Symbol)	PLANTING SPECIFICATION				
73	(Symbol)	PLANTING SPECIFICATION				
74	(Symbol)	PLANTING SPECIFICATION				
75	(Symbol)	PLANTING SPECIFICATION				
76	(Symbol)	PLANTING SPECIFICATION				
77	(Symbol)	PLANTING SPECIFICATION				
78	(Symbol)	PLANTING SPECIFICATION				
79	(Symbol)	PLANTING SPECIFICATION				
80	(Symbol)	PLANTING SPECIFICATION				
81	(Symbol)	PLANTING SPECIFICATION				
82	(Symbol)	PLANTING SPECIFICATION				
83	(Symbol)	PLANTING SPECIFICATION				
84	(Symbol)	PLANTING SPECIFICATION				
85	(Symbol)	PLANTING SPECIFICATION				
86	(Symbol)	PLANTING SPECIFICATION				
87	(Symbol)	PLANTING SPECIFICATION				
88	(Symbol)	PLANTING SPECIFICATION				
89	(Symbol)	PLANTING SPECIFICATION				
90	(Symbol)	PLANTING SPECIFICATION				
91	(Symbol)	PLANTING SPECIFICATION				
92	(Symbol)	PLANTING SPECIFICATION				
93	(Symbol)	PLANTING SPECIFICATION				
94	(Symbol)	PLANTING SPECIFICATION				
95	(Symbol)	PLANTING SPECIFICATION				
96	(Symbol)	PLANTING SPECIFICATION				
97	(Symbol)	PLANTING SPECIFICATION				
98	(Symbol)	PLANTING SPECIFICATION				
99	(Symbol)	PLANTING SPECIFICATION				
100	(Symbol)	PLANTING SPECIFICATION				

519 IRVING AVENUE  
WHEATON, IL 60187

LANDSCAPE  
PLAN & TREE  
PROTECTION

WHEATON COLLEGE  
LIBRARY

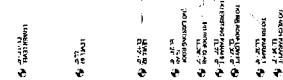
DESIGNED BY  
L1

DATE  
201408

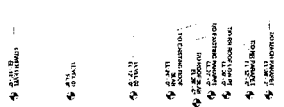
SCALE  
L1



## SECRET - US - R



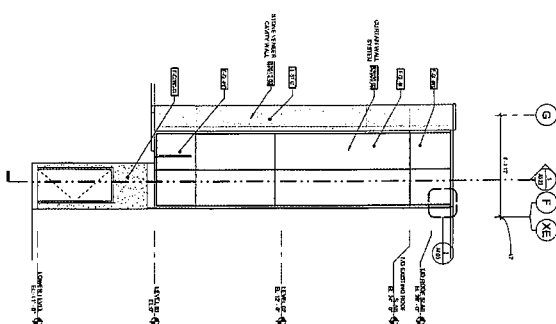
SCALE 15-70

Architecture, Planning,  
 Interior and Urban Design

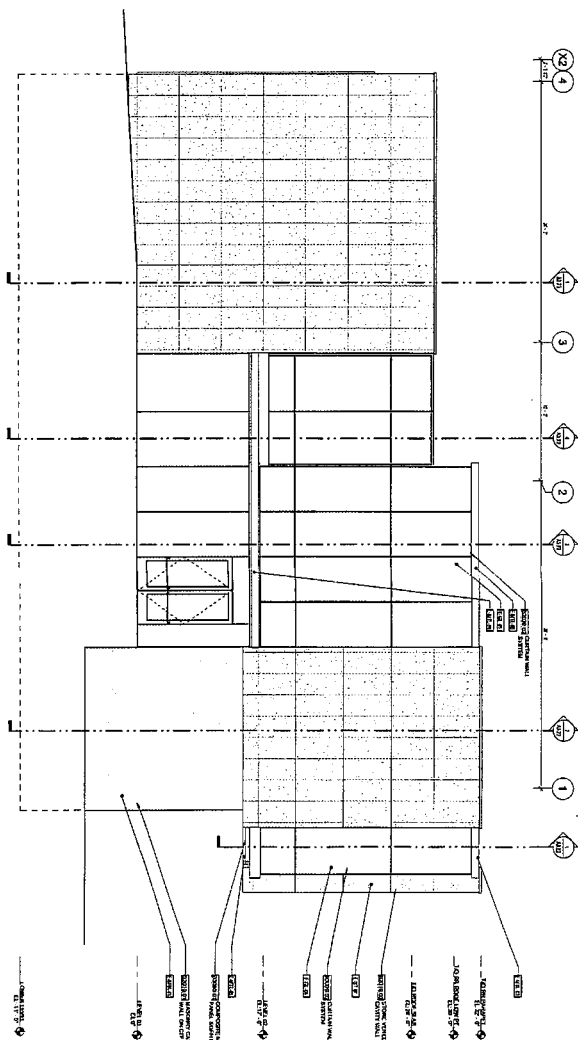
510 IRVING AVENUE  
WHEATON, IL 60187

Drawn By:	Checked By:
THAK	planc
Project Number:	2024006
Sheet Number:	





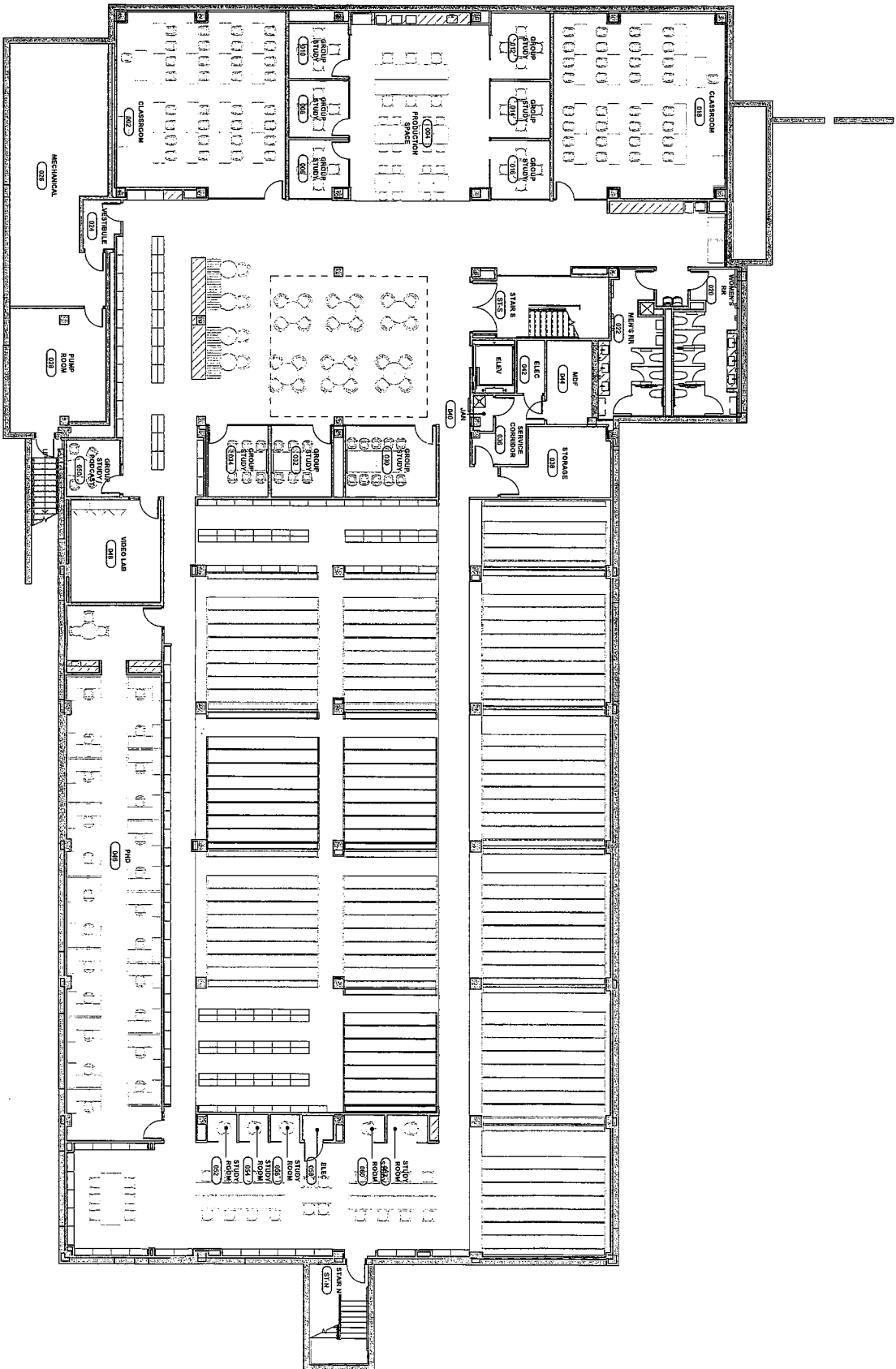
**3 PARTIAL NORTH ELEVATION B**  
SCALE 1/8" = 1'-0"



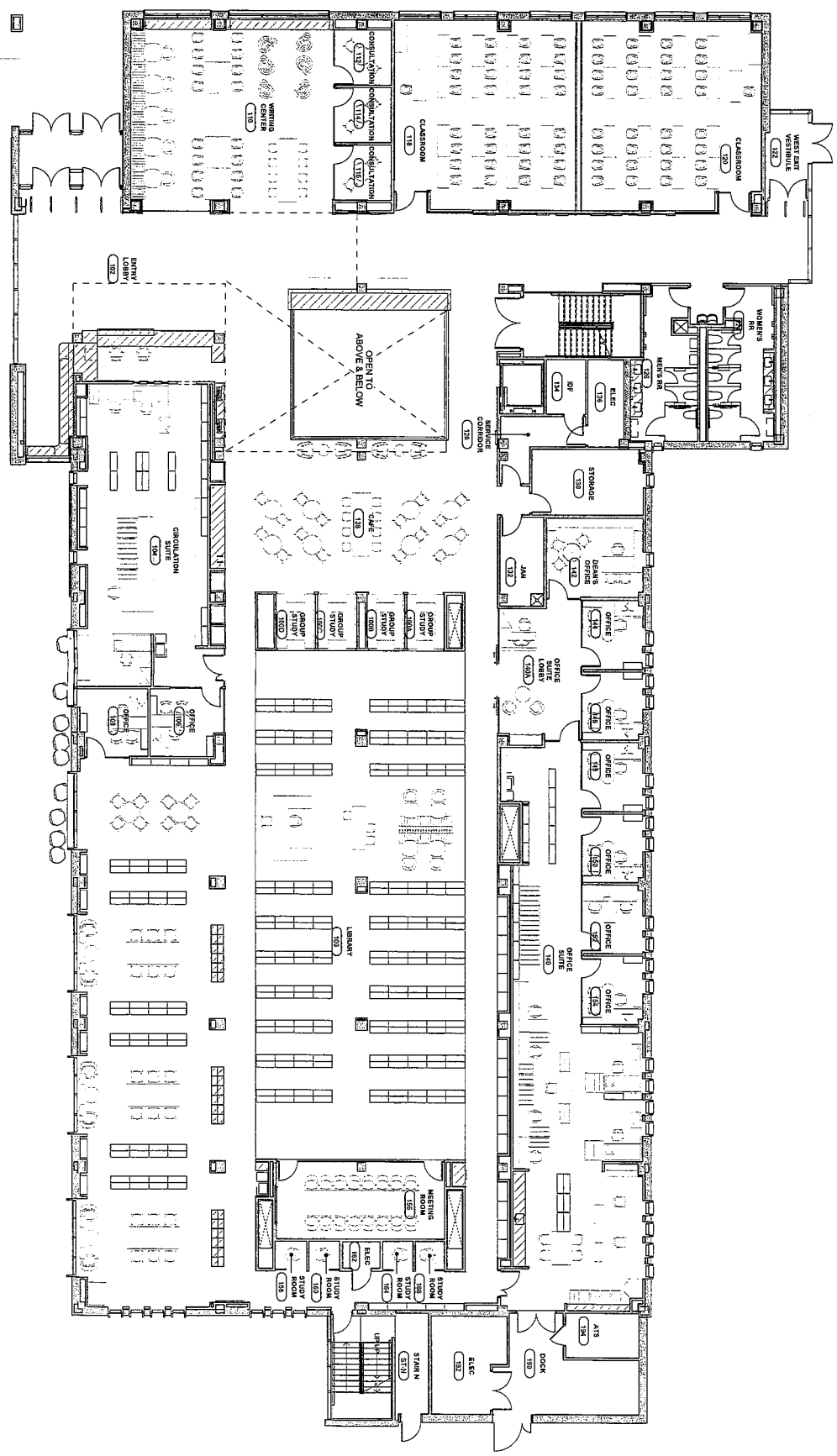
**1 WEST - ENLARGED ADDITION ELEVATION**  
SCALE: 1/8" = 1'-0"



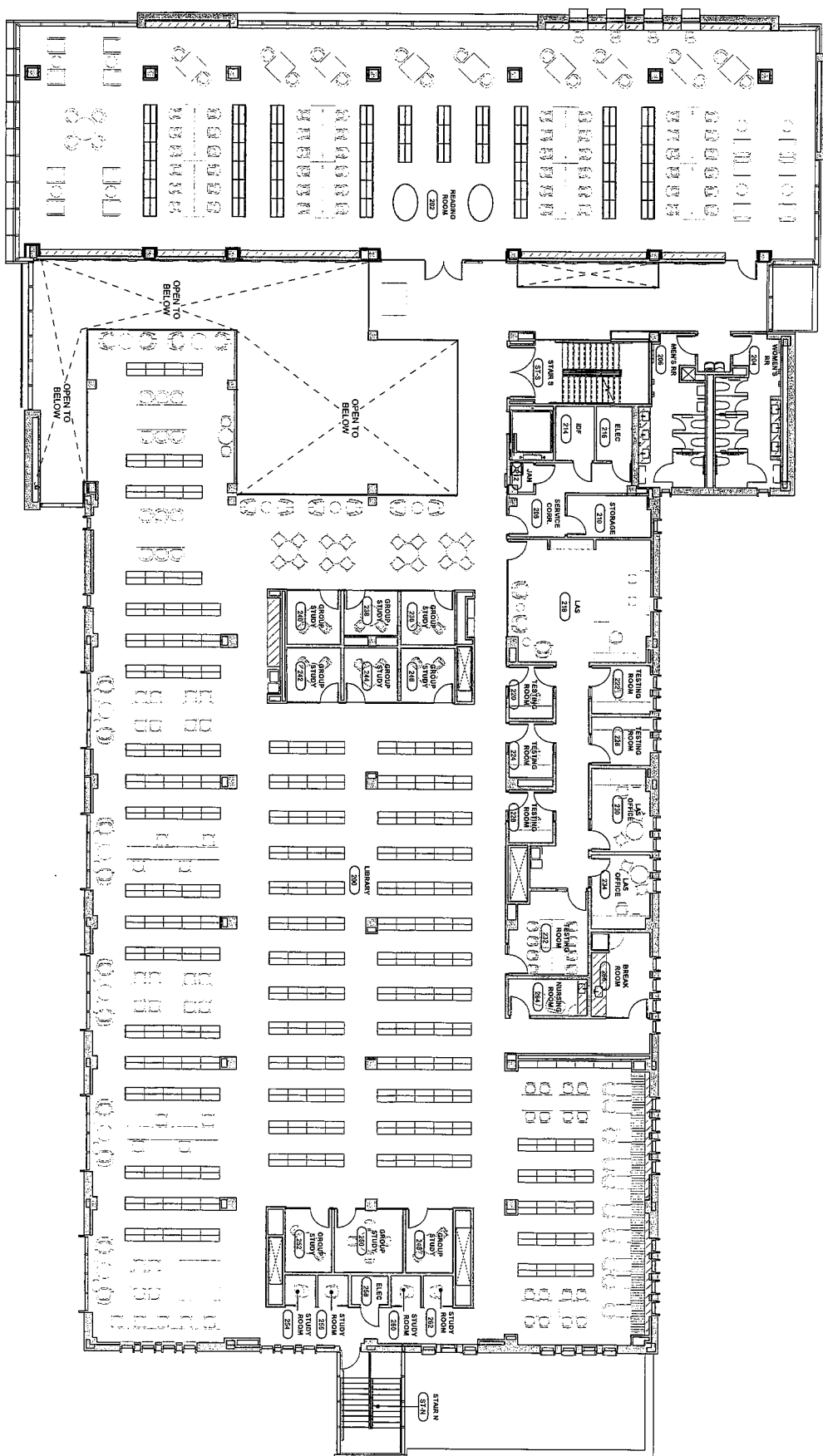
Lower Level



# Level 01



7





## View Looking West- From Quad

---





## Exterior- Western Exit

---





## Exterior- Southwest corner

---





**REPORT OF THE WHEATON PLANNING & ZONING BOARD  
TO THE  
MAYOR OF WHEATON AND CITY COUNCIL**

**ZA #26-03/ Special Use Permit/ 510 Irving Avenue/ Wheaton College**

Pursuant to notice duly published on January 9, 2026, and letters mailed to neighboring property owners on January 7, 2026, Chair Aranas called to order the January 27, 2026 public hearing requesting a special use permit pursuant to Article 14.1.3 of the Wheaton Zoning Ordinance to allow the construction and use of a one-story addition on the north side and a three-story addition on the south side of the existing Wheaton College Library constructed in the 1970's, following the demolition of the 1950's portion, located at 510 Irving Avenue.

Jay Bieszke, 501 College Avenue, Wheaton was sworn in. Mr. Bieszke stated that he was the Director of Facilities for Wheaton College. He stated that a small, one-story addition is proposed on the north side of the existing building. A three-story addition is further proposed on the south side of the existing building, following the demolition of the 1950's portion. The total square footage to be demolished is 26,830 square feet and the total square footage to be added is 28,578 square feet, resulting in a small net increase. The existing library would be fully renovated as part of this project and the existing Wheaton College parking lot to the north of the library will remain unchanged.

Mr. Bieszke stated that the project is fully code compliant with the bulk regulations contained in Article 14.2 of the Wheaton Zoning Ordinance. All new mechanical equipment will be fully screened from view. A new loading dock, which is part of the one-story addition on the north side of the building, will also be fully screened from view and moved closer to the truck access points, reducing truck back-up noise.

Mr. Bieszke stated that new landscaping is planned around the north addition, which includes a shade tree and two types of deciduous shrubs. New landscaping is further planned around the south addition, which includes shade trees, ornamental trees, deciduous shrubs, evergreen shrubs, perennials, ground cover, and ornamental grasses.

Mr. Bieszke stated that the one-story addition includes a loading dock and electrical room on Level 1. The three-story addition includes classrooms, group study spaces, and a production space on the Lower Level; classrooms, consultations rooms, and a writing center on Level 1; and a reading room on Level 2.

Mr. Bieszke stated that the building will be clad with a combination of brick and stone veneer. Color elevations were provided at the public hearing that show a mix of red brick and limestone looking stone to complement other Wheaton College buildings, including Edmund Chapel.

The Board questioned whether the project met the City's detention requirements.

Director Tebrugge stated that the proposed development triggers the City of Wheaton requirement to provide detention for the project. A preliminary stormwater report has been provided as a part of the planning and zoning submittal, and the proposed development will have all required detention subtracted from the Wheaton College Regional Detention Facility which still has excess storage available for the project.

Jan Jones, 425 E. Jefferson Avenue, Wheaton was sworn in. Ms. Jones stated that she was representing the single-family neighbors to the north of the library. She stated that they are supportive of the library addition

and renovation, but they would like to see additional landscaping on the northern edge of the Edmund Chapel parking lot even though it's out of the project area.

Mr. Bieszke stated that they want to be a good neighbor and they would install additional landscaping on the northern edge of the Edmund Chapel parking lot, even though it's out of the project area.

Mr. Dabovich moved and then Mr. Gudmundson seconded the motion to close the public hearing. On a voice vote, all voted aye.

Mr. Plunkett moved and then Ms. Horejs second the motion to waive their regular rules and vote tonight. On a voice vote, all voted aye.

### **Recommendation**

Mr. Plunkett moved and then Mr. Gudmunson seconded the motion to recommend approval of ZA # 26-03, requesting a special use permit pursuant to Article 14.1.3 of the Wheaton Zoning Ordinance to allow the construction and use of a one-story addition on the north side and a three-story addition on the south side of the existing Wheaton College Library constructed in the 1970's, following the demolition of the 1950's portion, subject to the condition that the preliminary engineering plan shall be subject to further staff review prior to the issuance of a site development permit.

	<u>Roll Call Vote</u>
Ayes:	Nicole Aranas
	Ben Blume
	Chris Dabovich
	Bob Gudmundson
	Cecilia Horejs
	Mark Plunkett
	Philip Spittler

Nays:	None
-------	------

Absent:	None
---------	------

Motion Unanimously Passed

Nicole Aranas, Chair  
Wheaton Planning and Zoning Board

### **Findings of Fact**

1. The Board unanimously finds that the establishment, maintenance, and operation of the special use would not be detrimental to the public health, safety, morals, comfort, convenience, and general welfare.
2. The Board unanimously finds that the special use would not be injurious to the uses and enjoyment of other property in the immediate vicinity for the purposes already permitted, and not substantially diminish property values within the neighborhood.
3. The Board unanimously finds that the establishment of the special use would not impede the normal and orderly development and improvement of the surrounding property for uses already permitted.

4. The Board unanimously finds that adequate utilities, access ways, drainage, and other necessary facilities would be provided.
5. The Board unanimously finds that adequate measures would be taken to provide ingress and egress designed to minimize traffic congestion in the public streets.
6. The Board unanimously finds that the special use would comply with the objectives of the Wheaton Comprehensive Plan.
7. The Board unanimously finds that the special use would conform to the applicable requirements of the district in which it is located as well as any other applicable requirements of this ordinance.



January 27, 2026

Wheaton Planning and Zoning Board  
303 West Wesley Street  
Wheaton, IL 60187

RE:     *ZA #26-03/ Special Use/ 510 Irving Avenue/ Wheaton College*

Dear Members of the Board:

Attached to this memorandum is an application requesting a special use permit pursuant to Article 14.1.3 of the Wheaton Zoning Ordinance to allow the construction and use of a one-story addition on the north side and a three-story addition on the south side of the existing Wheaton College Library constructed in the 1970's, following the demolition of the 1950's portion, located at 510 Irving Avenue.

The application has been submitted by the property owner, Wheaton College, 501 College Avenue, Wheaton, IL 60187.

**Zoning Analysis**

Proposal:	An application requesting a special use permit to Article 14.1.3 of the Wheaton Zoning Ordinance to allow the construction and use of a one-story addition on the north side and a three-story addition on the south side of the existing Wheaton College Library constructed in the 1970's, following the demolition of the 1950's portion, located at 510 Irving Avenue.
Applicant:	The application has been submitted by the property owner, Wheaton College, 501 College Avenue, Wheaton, IL 60187.
Subject Property:	510 Irving Avenue, Wheaton, IL 60187
Zoning Classification:	I-1 Institutional District
Surrounding Conditions:	North: Wheaton College Properties/I-1 Institutional District East: Wheaton College Properties/I-1 Institutional District South: Wheaton College Properties/I-1 Institutional District West: Wheaton College Properties/I-1 Institutional District

WHEATON MAYOR PHILIP J. SUESS



CITY MANAGER MICHAEL DZUGAN

CITY COUNCIL: ERICA BRAY-PARKER | LEAH BRICE | SCOTT BROWN | BRADLEY CLOUSING | LYNN ROBBINS | SCOTT WELLER

## **Planning Department Comments**

### **Background**

The Wheaton College Library, part of the Wheaton College campus, is situated on the west side of Irving Avenue, between Kenilworth and Union Avenues. The closest residential properties are located at the northeast corner of Irving and Kenilworth Avenues.

### **Site Plan and Landscaping**

A small, one-story addition is proposed on the north side of the existing building. A three-story addition is further proposed on the south side of the existing building, following the demolition of the 1950's portion. The total square footage to be demolished is 26,830 square feet and the total square footage to be added is 28,578 square feet, resulting in a small net increase. The existing library would be fully renovated as part of this project and the existing Wheaton College parking lot to the north of the library will remain unchanged.

The project is fully code compliant with the bulk regulations contained in Article 14.2 of the Wheaton Zoning Ordinance. All new mechanical equipment will be fully screened from view. A new loading dock, which is part of the one-story addition on the north side of the building, will also be fully screened from view and moved closer to the truck access points, reducing truck back-up noise.

New landscaping is planned around the north addition, which includes a shade tree and two types of deciduous shrubs. New landscaping is further planned around the south addition, which includes shade trees, ornamental trees, deciduous shrubs, evergreen shrubs, perennials, ground cover, and ornamental grasses.

### **Floor Plan and Building Elevations**

The one-story addition includes a loading dock and electrical room on Level 1. The three-story addition includes classrooms, group study spaces, and a production space on the Lower Level; classrooms, consultations rooms, and a writing center on Level 1; and a reading room on Level 2.

Per the building elevations, the building will be clad with a combination of stone veneer and composite metal panels. However, no color elevations have been provided. At the public hearing, the applicant shall provide a building elevation showing the proposed colors and materials selections.

### **Special Use Permit**

A special use permit is required to add an addition to an existing College or University building. According to Article 5.10D of the Wheaton Zoning Ordinance, the applicant must provide sufficient evidence at the public hearing that the following special use permit will be met:

1. The establishment, maintenance, or operation of the special use shall not be detrimental to the public health, safety, morals, comfort, convenience, and general welfare.
2. The special use shall not be injurious to the uses and enjoyment of other property in the immediate vicinity for the purposes already permitted, not substantially diminish property values within the neighborhood.

3. The establishment of the special use shall not impede the normal and orderly development and improvement of the surrounding property for uses already permitted.
4. Adequate utilities, access ways, drainage, and other necessary facilities shall be provided.
5. Adequate measures shall be taken to provide ingress and egress designed to minimize traffic congestion in the public streets.
6. The special use shall comply with the objectives of the Wheaton Comprehensive Plan.
7. The special use shall conform to the applicable requirements of the district in which it is located as well as any other applicable requirements of this ordinance, except as many be varied by the Planning and Zoning Board or City Council.

#### **Engineering Department Comments**

The subject site does not contain a floodplain nor a wetland pursuant to the regulatory maps used for such determinations.

The proposed development triggers the City of Wheaton requirement to provide detention for the project. A preliminary stormwater report has been provided as a part of the planning and zoning submittal, and the proposed development will have all required detention subtracted from the Wheaton College Regional Detention Facility which still has excess storage available for the project.

The proposed development does not appear to meet the trigger to provide a Best Management Practice (BMP) to reduce pollutants in their stormwater discharge.

No traffic report was provided as a part of the submittal. The proposed building addition is not expected to generate any significant vehicular traffic nor affect the adjoining City roadway system. Additionally, no parking is being changed by the project.

The preliminary engineering plan shall be subject to further staff review prior to the issuance of a site development permit.

#### **Staff Recommendation**

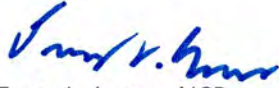
Provided that the applicant sufficiently addresses the special use standards at the public hearing, staff is supportive of granting the special use request, subject to the following conditions:

1. The applicant shall provide a building elevation showing the proposed colors and materials selections at the public hearing; and
2. The preliminary engineering plan shall be subject to further staff review prior to the issuance of a site development permit.

Respectfully submitted,



Joseph E. Tebrugge, PE  
Director of Engineering

A handwritten signature in blue ink, appearing to read "Tracy L. Jones".

Tracy L. Jones, AICP  
Staff Planner

Attachments

# Wheaton College Library Renovation & Addition

## Scope Narrative

November 21st, 2025

Wheaton College proposes a renovation and addition to the existing Library building located at 510 Irving Avenue. Construction is anticipated to begin in the spring of 2027 thru the summer of 2028. Representatives from Wheaton College, architect of record SCB, and officials from the City of Wheaton Building Department have met on several occasions over the last year to discuss this project. As part of regular efforts to keep neighbors informed of campus projects, a letter from the College to neighbors within proximity to the extents of the site of the project was sent out for awareness in October of 2025, in addition to the communication that will come as part of this Special Use Permit process. The College Trustees recently provided preliminary approval for construction to start in the spring of 2027. Wheaton College requests that the ordinance extends the Special Use Permit approval until the summer of 2027 to align with the anticipated start of construction.

### **Project Overview**

The existing Wheaton College Library consists of two connected buildings. This includes the south building from the 1950's referred to as the Nicholas Building and a north building constructed in the 1970's previously referred to as the Buswell Building. The intent of this project is to demolish the original 1950's south building and replace it with a newly constructed addition. The new addition would connect directly to the remaining north building which would be fully renovated as part of the construction. The resulting new Library will be more energy efficient with an improved exterior envelope and new mechanical, electrical, and plumbing systems. The new layout and aligned connection between the addition and renovated area will greatly improve the accessibility within the building and the site has been designed to improve access. The primary intent of this project is to create a building with capacity and efficiency to hold our library collection and allow for growth, while serving students better with improved access to library services, a variety of study spaces, and modern classroom spaces.

### **Exterior Design and Site**

The exterior design of the building addition applies materials that are consistently used throughout the campus in a conservatively modern expression. The gross square footage of the whole project is nearly the same as the existing buildings ( $\pm 700$  SF), minimizing impacts to stormwater, and neighboring property. Improvements include removing the loading dock on the far West side of the building and relocating it to the North, which minimizes the distance that trucks need to back up to get to the dock and allows for green space and future pedestrian gateway where the drive currently exists. There is no intent to change the College-owned portion of Irving Avenue at this time, but it will be affected by utility connections during construction.

### **Application Comments**

Item 10: Wheaton College has reviewed this project with the Planning department and confirmed that PACE coordination is not required for this project.



Item 11: A demolition Permit Application will be submitted at the appropriate time per the intended construction schedule described above.

Item 13: This project spans multiple parcels. Separately, Wheaton College intends to pursue consolidation of multiple parcels including those affected by this project and has reviewed this with the Director of Engineering.

Item 18: Traffic Report is not required for this project per the Director of Engineering. Access to public roads will not be affected by this project.

#### *Compliance with Article 5.10.D of the Zoning Ordinance*

1. *The establishment, maintenance, or operation of the special use shall not be detrimental to the public health, safety, morals, comfort, convenience, and general welfare;*
  - i. This project will improve building access, infrastructure, and energy efficiency without negatively impacting the neighboring campus or residential neighborhood.
2. *The special use shall not be injurious to the uses and enjoyment of other property in the immediate vicinity for the purposes already permitted, not substantially diminish property values within the neighborhood;*
  - i. The nearest neighboring private properties are to the North of the extents of the project. The proposal is adhering to all required building and landscape setbacks, all mechanical equipment will be screened from view, and the dock/trash area will be screened and moved closer to the truck access points reducing back-up noise.
3. *The establishment of a special use shall not impede the normal and orderly development and improvement of the surrounding property for uses already permitted;*
  - i. The proposed use is consistent with the zoning direction the city has planned for the immediate neighborhood and will not impede future development or improvement.
4. *Adequate utilities, access ways, drainage, and other necessary facilities shall be provided;*
  - i. All of these systems will be provided in compliance with the City requirements. The new building will connect to nearby public utilities. The storm water storage needs of the project are provided for by existing capacity in the College's regional storm water basin.
5. *Adequate measures shall be taken to provide ingress and egress designed to minimize traffic congestion in the public streets;*
  - i. The project has no alterations to public streets, and existing ingress and egress into the parking lot to the north will be unchanged.
6. *The proposed use shall comply with the objectives of the Wheaton Comprehensive Plan;*

- i. The I-1 zoning will not change for this development. Consistent with the Comprehensive Plan (p. 59), "The campus is located within an I-1 Institutional zoning district, with boundaries configured to accommodate the College's current facilities and potential expansion into adjacent areas." The College has held a meeting for neighbors near this project to review the plans and to listen to their comments and concerns, as well as reviewed the project with City Officials.
- 7. *The special use shall conform to the applicable requirements of the district in which it is located, as well as any other applicable requirements of this ordinance, except as may be varied by the Board or City Council.*
  - i. The design of the proposed Library renovation and addition is intended to blend well with the existing character of the Wheaton College campus. There are no zoning variances requested for this application.

